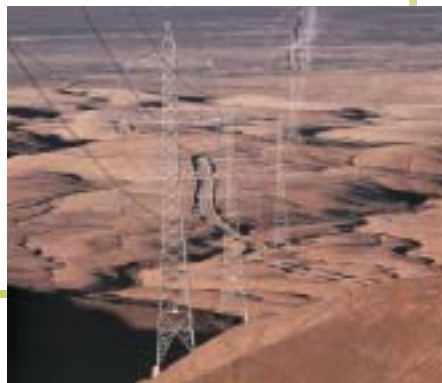




Operation Statistics
1995 / 2004
CDEC - SING





CDEC-SING Member Companies



This issue is accompanied by a CD containing the information in electronic format, in both Spanish and English and an electronic spreadsheet showing comprehensive data. The information in the CD can be accessed at: <http://www.cdec-sing.cl>



TABLE OF CONTENTS

Presentation

| | |
|---|---|
| Letter from CDEC-SING'S Chairman of the Board | 2 |
| CDEC-SING Board of Directors | 4 |
| CDEC-SING Personnel | 6 |

Introduction and Brief History

| | |
|-----------------------|----|
| General Description | 9 |
| Historical Background | 9 |
| Document Contents | 10 |
| Brief History | 10 |

CDEC-SING Task and Responsibilities

| | |
|--------------------------------|----|
| CDEC-SING Regulatory Framework | 16 |
| CDEC-SING Structure | 18 |
| CDEC-SING Companies | 19 |
| SING Economic Operation | 20 |

SING Facilities Background

| | |
|--|----|
| SING Generating Units | 22 |
| SING Transmission Lines | 24 |
| SING Major Clients as of December 2004 | 26 |
| Simplified Diagram of SING-2004 | 27 |

SING Significant Events in 2004

| | |
|--------------------------------------|----|
| Generation and Transmission Projects | 28 |
| Operation | 28 |
| Miscellaneous | 29 |

1995-2004 Operation Statistics

| | |
|--|----|
| Installed Capacity | 32 |
| Installed Capacity per Company | 32 |
| Installed Capacity per Type of Fuel | 33 |
| Gross Generation | 34 |
| Generation of SING Power Plants Year 2004 | 35 |
| Generation of SING Power Plants 1995 - 2004 | 37 |
| Monthly Average Generation per Hour 1995 - 2004 | 39 |
| Annual Fuel Consumption per Power Plant | 40 |
| SING Annual Sales 1995 - 2004 | 41 |
| SING Annual Sales Composition 1995 - 2004 | 42 |
| Energy Transfers among CDEC-SING Generators Year 2004 | 43 |
| Energy Transfers among CDEC-SING Generators 1995 - 2004 Period | 44 |
| Power Transfers among CDEC-SING Generators Year 2004 | 45 |
| Power Transfers among CDEC-SING Generators 1995 - 2004 Period | 46 |
| SING Annual Peak Demand 1995 - 2004 Period | 47 |
| Gross Hourly Generation. Typical Daily Curves. Year 2004 | 48 |
| Marginal Costs of 220 kV. Cruise Node Energy. Year 2004 | 50 |
| Marginal Energy Costs Cruise Node 220 kV. 1995 - 2004 Period | 52 |
| Energy Penalty Factors Year 2004 | 53 |
| Fuel Cost per Power Plant | 54 |

LETTER FROM CDEC-SING'S CHAIRMAN OF THE BOARD

I am pleased to present the tenth version of the Operation Statistics of the generation and transmission facilities coordinated by the Norte Grande Interconnected System's Economic Load Dispatch Center (CDEC-SING). The Statistics include a summary of the significant events related to SING operations over 2004.

The 1995-2004 issue comprises SING information about electric power generation, transmission and consumption; fuel consumption by power plants; and energy and power transfers among the CDEC-SING's member companies. Also contained are other data that might be helpful to member companies, users, and any individual or corporation interested in the Norte Grande electrical sector (Chile's First and Second Regions).

By the end of 2004 the CDEC-SING's Board of Directors represented AESGENER, CELTA, EDELNOR, ELECTROANDINA, GASATACAMA GENERACIÓN, NORGENER and TRANSELEC NORTE.

In 2004 the SING's gross maximum hourly generation rose 12.1 percent from 2003, to 1,644 MW. Gross energy output accumulated over 2004 totaled 12,330 GWh, or 7.9 percent more than in 2003. Energy sales to end customers, in turn, reached 11,240 GWh in 2004, up 7.2 percent from 2003.

The SING's electricity was generated as follows in 2004: 61.6 percent natural gas, 37.3 percent coal and other solid fuels, 0.4 percent fuel oil, 0.2 percent diesel oil, and 0.5 percent hydro. Unexpected restrictions in the supply of natural gas from

Argentina affected the fuel sources of SING generators, explaining the increase in generation from solid and liquid fuels.

Regarding generation from solid fuels the SING faced a significant hike in international-market coal prices. This was added to soaring transportation costs due to a higher demand of basic inputs, mainly by the Chinese economy, and by cheerful economic indicators around the globe.

The new 220-kV Encuentro-Collahuasi transmission line owned by Compañía Minera Doña Inés de Collahuasi, put in service on June 8, 2004, was a valuable addition to the SING's facilities.

The old U-9 Unit, which started operations in 1960, was removed from the SING's generation service by owner ELECTROANDINA on December 10, 2004.

In terms of continuity of supply, an earthquake occurred on January 23, 2004, whose epicenter was in the Second Region, resulted in the only SING blackout since February 2000.

Law No. 19.940, effective as from March 13, 2004, amended Decree Law No. 1/82 with respect to the regulation of transmission systems; the description of the CDEC's corporate structures, including their Directorates of Operation and of Tolls; the bases for a complementary services market; and the creation of a new Experts Committee, one of whose functions is to solve discrepancies arising within the CDECs. To regulate the duties and activities of the Experts Committee, Decree No. 181, "Experts

Committee Regulations," was published on September 16, 2004. The Experts Committee members were appointed on July 12, 2004.

Over 2005 the CDEC-SING will confront new challenges, such as compliance with the requirements of the new Service Reliability and Quality Technical Standard for Interconnected Systems, and a recent amendment to the Electricity Law. Within the work plan targeted to the particular requirements this Technical Standard will impose, the SING will prepare and decide upon new Complementary Services procedures. Additionally, the SING will conduct technical studies to determine new operating criteria for the Directorates of Operation and of Tolls. The amendments to the Electricity Law will continue to be applied, especially for expansion, use and payment of transmission systems. At this point, the Directorate of Tolls and member companies will play an essential role.

The SING faced difficult operation conditions along 2004, resulting from restricted natural gas supplies as determined by Argentine authorities. The problem was compounded by the increased prices of solid and liquid fuels for generation, which altered the Norte Grande electricity market. Now we need the cooperation of all system agents, to adapt to these changes while maintaining a sustainable short-term and long-term power supply.

Let me conclude by expressing my appreciation for the contributions made by the Directors of the CDEC-SING's member companies; by the Director of Operation and of Tolls; and by all workers of the Directorates of Operation and of Tolls, whose efforts and enthusiasm are essential to obey the legal and regulatory provisions governing our CDEC-SING.

Sincerely,



Francisco Promis Baeza
CDEC-SING's Chairman of the Board

CDEC-SING BOARD OF DIRECTORS

CHAIRMAN

Francisco Promis Baeza

BOARD MEMBERS

Francisco Promis Baeza
EDELNOR S.A.

Lucas Sanhueza Yovanovich
ELECTROANDINA S.A.

Juan Carlos Olmedo Hidalgo
NORGENER S.A.

Eduardo Soto Trincado
CELTA S.A.

Pedro De la Sotta Sánchez
GASATACAMA GENERACIÓN S.A.

Carlos Aguirre Pallavicini
AES GENER S.A.

Eduardo Andrade Hours
HQI TRANSELEC NORTE S.A.

SECRETARY OF THE BOARD

Jorge Venegas Francke

ALTERNATE BOARD MEMBERS

Saska Stevkovska
EDELNOR S.A.

Mabel Cortés G.
ELECTROANDINA S.A.

Juan Pablo Cárdenas P.
NORGENER S.A.

Miguel Buzunáriz R.
CELTA S.A.

Javier Alemany M.
GASATACAMA GENERACIÓN S.A.

Carlos Campos J.
AES GENER S.A.

Belisario Maldonado M.
HQI TRANSELEC NORTE S.A.



CHAIRMAN OF THE BOARD
Francisco Promis Baeza
EDELNOR S.A.

Director
Eduardo Soto Trincado
CELTA S.A.



Director
Carlos Aguirre Pallavicini
AES GENER S.A.

ALTERNATE BOARD MEMBERS



Miguel Buzunáriz R.
CELTA S.A.



Saska Stevkovska
EDELNOR S.A.



Carlos Campos J.
AES GENER S.A.



Mabel Cortés G.
ELECTROANDINA S.A.



Juan Pablo Cárdenas P.
NORGENER S.A.



Belisario Maldonado M.
HQI TRANSELEC NORTE S.A.



Javier Alemany M.
GASATACAMA GENERACIÓN S.A.



Director
Juan Carlos Olmedo Hidalgo
NORGENER S.A.



Director
Pedro De la Sotta Sánchez
GASATACAMA GENERACIÓN S.A.



Director
Eduardo Andrade Hours
HQI TRANSELEC NORTE S.A.



Director
Lucas Sanhueza Yovanovich
ELECTROANDINA S.A.

CDEC-SING PERSONNEL

**DIRECTOR OF OPERATION AND
DIRECTOR OF WHEELING**
Carlos Finat Díaz

SUBDIRECTOR OF OPERATIONS
Víctor Hugo Araya Jiménez

SUBDIRECTOR OF WHEELING
Claudia Carrasco Arancibia

**HEAD DISPATCH AND CONTROL
CENTER**
Raúl Moreno Tornería

HEAD PLANNING AND STUDIES
René Valdés Aburto

HEAD TRANSFERS
José Miguel Arévalo Araneda



CDEC-SING
Antofagasta Personnel



CDEC-SING
Santiago Personnel



Introduction
and Brief History

CDEC - SING



INTRODUCTION AND BRIEF HISTORY

GENERAL DESCRIPTION

The Norte Grande Interconnected System (SING) extends between Tarapaca and Antofagasta, Chile's Regions One and Two, respectively, covering an area of 185,142 km², equivalent to 24.5% of the country's continental territory. This zone is characterized by an extremely dry climate, which explains the very arid landscape, which is diversified both by the transverse relief and the high mountains. This has had a significant effect on population distribution and density. The population is concentrated mainly on the coastal area. According to the 2002 census, the population in this area accounts for 6,1% of Chile's total population, and it is concentrated mainly in a few towns and villages that are geographically separated. The SING is characterized by:

- Scarce water resources to generate electric power .
- Geographically separated electricity consumer centers.
- Mining companies are the main energy consumers.

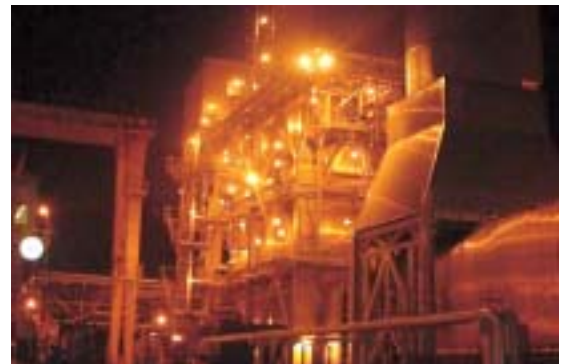
HISTORICAL BACKGROUND

Because of the hydrological, climatic and geographic conditions in the SING area, electricity supply in the different consumer centers started with independent local systems exclusively aimed at meeting local needs.

Some of these systems were interconnected at the end of 1982, giving origin to the SING. The coordinated operation of the SING facilities started on July 30, 1993, when its Centro de Despacho Económico de Carga – CDEC (Load Economic Dispatch Center) was created (CDEC SING).

At the beginning, the CDEC – SING was made up of the following generating companies: EDELNOR, ENDESA and CODELCO-CHILE'S Tocopilla Division, currently ELECTROANDINA. At December 2004 CDEC – SING was made up by the following companies: EDELNOR, ELECTROANDINA, NORGENER, CELTA, GASATACAMA GENERACION, AES GENER and TRANSELEC NORTE.

introduction



INTRODUCTION AND BRIEF HISTORY

DOCUMENT CONTENTS

This document presents SING relevant information for the August 1993 December 2003 period. The information has been grouped into five chapters including the following topics:

- The first chapter contains the letter from the President of the Board of Directors, the composition of the Board, the structure of the Operations and Wheel Directorates.
- The second chapter includes a brief history about the creation of the CDEC-SING.
- The third chapter presents CDEC-SING tasks and responsibilities, including the legal framework in effect as of December 2004, the way it is regulated and CDEC-SING attributions and responsibilities. It also includes information about the transmission grid and the existing generators as of December 2004, describing the characteristics of the transmission and generation facilities, and identifying SING main consumption figures.
- The fourth chapter shows the significant events occurred in the SING during 2004.
- The fifth chapter contains the system's operation statistics from the beginning until December 2004, including charts and tables showing the evolution of output and

consumption, together with the amounts and prices of energy and power transfers among relevant SING member companies.

BRIEF HISTORY

Initially, the electric supply needs of the Norte Grande region were met with electric systems that evolved along separate ways. In 1980 the National Energy Commission (NEC), convinced of the benefits of interconnected electric systems, conducted a study on the feasibility of connecting the Tocopilla-Chuquicamata system of CODELCO-CHILE's Chuquicamata Division with EDELNOR's systems in the Norte Grande region. EDELNOR, CODELCO, ENDESA and SOQUIMICH were of great help.

The study yielded extremely positive results, and the NEC gave the project a decided boost.

The first steps were taken in 1983: CODELCO and EDELNOR agreed on the construction work required for interconnection. Also in 1983 CODELCO placed in service Unit No. 12, the first coal steam unit to operate within the SING. Later, in 1984, a



contract provided that CODELCO-CHILE's Tocopilla Division should supply 56 MW to EDELNOR as from November 1987. This amount would subsequently grow to 101 MW.

With the decisive support of the NEC and the joint efforts of EDELNOR, CODELCO-CHILE and ENDESA, the SING saw the light in November 1987. The next logical step for CODELCO was to add a modern Load Dispatch Center in Tocopilla, equipped with a Supervisory Control and Data Acquisition (SCADA) system. Besides, CODELCO expanded its Tocopilla Power Plant by installing two 125-MW coal steam units, No. 14 and No. 15, and built 220-kV transmission lines running from the Tocopilla to the Crucero Substations and Chuquicamata Substation.

EDELNOR, in turn, set up 220-kV lines connecting the Tarapacá and Antofagasta systems. Additionally, it erected the Mejillones and Pozo Almonte Terminal Substations, together with the Crucero Substation, which provided a link to the CODELCO system. EDELNOR, furthermore, raised the Arica-Pozo Almonte voltage to 110 kV and reinforced the Iquique-Pozo Almonte connection. Finally, the company furnished a 110-kV connection between Mejillones and Antofagasta, and introduced a Load Dispatch Center equipped with a SCADA system in Antofagasta.

EDELNOR, in turn, set up 220-kV lines connecting the Tarapacá and Antofagasta systems. Additionally, it erected the Mejillones and Pozo Almonte Terminal Substations, together with the Crucero Substation, which provided a link to the CODELCO system. EDELNOR, furthermore, raised the Arica-Pozo Almonte voltage to 110 kV and reinforced the Iquique-Pozo Almonte connection. Finally, the company furnished a 110-kV connection between Mejillones and Antofagasta, and introduced a Load Dispatch Center equipped with a SCADA system in Antofagasta.

In 1993 ENDESA set into operation its 74-MW Mejillones Power Plant in the city of the same name. ENDESA joined the system on July 30, 1993, giving origin to the coordinated operation of generation and transmission facilities, under the provisions of the 1982 Chilean Electricity Law (Decree Law No. 1 of 1982) and the Coordination Regulations set forth in Supreme Decree (SD) N°6 of 1985 (SD N°6/1985).

By the time the CDEC-SING came to life, total installed power amounted to 745.1 MW.

NORGENER was added to the CDEC-SING in February 1995 through the commercial operation of Unit No. 1, located in the city of Tocopilla.



BRIEF HISTORY

EDELNOR rented the Mantos Blancos Diesel Power Plant in September 1995. Besides, it signed a contract with EECSA for the total output of the Cavancha Power Plant as from November 1995. Also in 1995, ENDESA began to operate Gas Turbine No. 3 at the Mejillones Substation.

EDELNOR's Unit No. 1, at the Mejillones Thermoelectric Power Plant, was integrated in 1995. EDELNOR contracted the total production of the ENAEX Power Plant as from February 1996.

During 1996 as well, CODELCO-CHILE's Tocopilla Division changed its corporate name to ELECTROANDINA.

NORGENER's Unit No. 2 was connected to the system in 1997.

The NORGENER substation was also interconnected to the system, in addition to the 220-kV, double circuit transmission line extending from the NORGENER Substation to the Crucero Substation. ENDESA's gas turbine No. 3 was removed from the system on January 1, 1997.

In 1998, EDELNOR activated Unit No. 2 of the Mejillones Thermoelectric Power Plant. CELTA, in turn, joined the CDEC-SING through the commercial operation of a gas turbine called TGTAR. In October 1998, NOPEL was added to the CDEC-SING. Over 1999, the CDEC-SING allowed the following interconnections: CELTA's coal steam Unit No. 1 at its Tarapacá Thermoelectric Power Plant; NOPEL's combined cycles No. 1 and No. 2 at its Atacama Power Plant; and GENER's gas turbines No. 11 and No. 12 at its Salta Power Plant (in April 1999).

ENDESA's gas turbines in Mejillones were removed from the SING on January 3, 1999, to be transferred to the Interconnected Central System (SIC). On May 12, 1999, ENDESA's diesel gas turbine in Patache was also removed from the SING to be transferred to the SIC. ENDESA, therefore, left the CDEC-SING.

On November 29, 1999, this diesel gas turbine, then owned by CELTA, was reconnected to the SING.



A number of lines were connected to the transmission system along 1999: NOPEL's 220-kV Atacama-Encuentro and Encuentro-Crucero lines in February; GENER's 220-kV Andes-Oeste line, the two circuits of its 220-kV Andes-Nueva Zaldívar line, and its 345-kV Salta-Andes line, in April; GENER's Laberinto-Mantos Blancos line in May; and EDELNOR's 110-kV Capricornio-Alto Norte and Capricornio-Antofagasta lines in November.

Steam turbine No. 10 at GENER's Salta Power Plant joined the generating system in April 2000, while EDELNOR's combined cycle Unit No. 3 at its Mejillones Thermoelectric Power Plant started commercial operations in June 2000.

ELECTROANDINA's combined cycle Unit U16 at the Tocopilla Thermoelectric Power Plant was put in service in February 2001.

In July 2001, NEC's Exempt Resolution No. 236 approved the CDEC-SING's Internal Regulations. GENER changed its corporate name to AES GENER in August 2001.

In late 2001 and early 2002, NOPEL's 220-kV Atacama-Esmeralda, Tarapacá-Condores, and Condores-Parinacota lines were connected, in order to supply electricity to the Antofagasta, Iquique and Arica distribution companies, respectively. For this purpose a new company, TRANSEMEL, was created. TRANSEMEL is not a member of the CDEC-SING; it is affiliated to the distribution companies whose transmission facilities were used. In this way new substation and transmission lines were put in service, while some existing ones were modified.

In October 2002 NOPEL changed its corporate name to GASATACAMA GENERACIÓN.

brief history



BRIEF HISTORY

GASATACAMA GENERACIÓN initiated the commercial operations of the TG2A gas turbine of combined cycle No. 2 in November 2002.

In June 2003, under the provisions contained in Article No. 168 of SD No. 327, TRANSELEC NORTE joined the CDEC-SING upon acquiring transmission assets, first from CELTA and then from GASATACAMA GENERACIÓN.

The 220-kV Encuentro-Collahuasi line owned by the Doña Inés de Collahuasi mining company was connected in June 2004.

As from December 10, 2004, ELECTROANDINA announced the removal from service of its Unit U09.

Finally, the CDEC-SING's gross installed power totaled 3595.8 MW by December 2004.

brief history





Task and
Responsibilities

CDEC - SING

CDEC-SING'S TASK AND RESPONSABILITIES

CDEC-SING REGULATORY FRAMEWORK

The regulatory framework described below was in force as at December 31, 2004.

As stipulated in Decree Law 1/1982, amended by Law No. 19.940/2004, the CDEC-SING is responsible for:

- a) Maintaining reliable electric service within the SING.
- b) Guaranteeing the most economic operation to SING facilities as a whole.
- c) Guaranteeing open access to trunk transmission and subtransmission systems.

Coordination in accordance with the provisions of the Chilean Electricity Law should comply with the rules and regulations specified by the National Energy Commission (NEC).

Also, coordination instructions issued by the CDEC-SING are mandatory for all system facilities, including electric power generation plants; trunk transmission, subtransmission and additional lines; electric substations, including primary

distribution substations and consumption bars of customers not subject to price regulations and directly supplied from a transmission system's facility, interconnected among them, allowing the generation, transportation and distribution of electric power within the system. Likewise, each member of the Economic Load Dispatch Center will be individually responsible for compliance with the requirements established by the laws or regulations. The remaining entities that, according to the laws and regulations, must subject their facilities' operations to the Center's coordination, will be equally responsible for compliance with the instructions and schedules issued by the Center.

CDEC-SING's duties include:

- a) Planning the electric system's short-term operations, considering both current conditions and medium and long-term projections; as well as notifying all members of such plans, so their facilities can be operated in accordance with the resulting schedules.



CDEC-SING'S TASK AND RESPONSABILITIES

- b) Calculating the instantaneous marginal costs of electric energy as derived from planned operation.
- c) Coordinating major preventive maintenance for the system's generating units.
- d) Checking compliance with operation and major preventive maintenance schedules, and taking the required corrective measures.
- e) Determining and valuing power transfers among CDEC-SING member companies.
- f) Specifying the procedures needed to meet service quality requirements and the additional standards set forth by law, and include them in its Internal Regulations.
- g) Setting, coordinating and checking the system's power reserve.
- h) Coordinating load shedding, and taking any other steps needed to maintain overall reliability of the SING's service.
- i) Issuing the reports required by the regulations.
- j) Checking that all system nodes from which power is drawn exhibit service reliability levels in conformity with the law.
- k) Establishing the minimum technical requirements to be met by any facility interconnected with the SING or modified by its owner. These requirements will be associated with the facility's contribution to reliability and service quality goals.
- l) Defining, managing and operating complementary services in order to guarantee the system's operation, respecting the reliability and service quality requirements and minimizing the SING's operating costs.

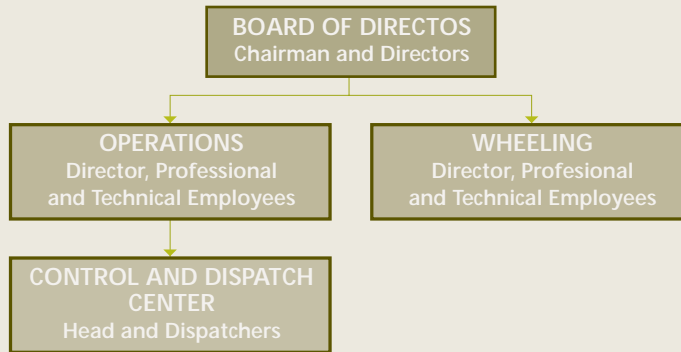
CDEC-SING's task and responsibilities



CDEC-SING'S TASK AND RESPONSABILITIES

STRUCTURE

In accordance with the provisions of Supreme Decree (SD) No. 327, the CDEC-SING's organizational chart is shown below:



The Board of Directors oversees regulatory aspects, in addition to the correct performance of the Directorates of Operation and Tolls. The Board's chief activities include approving the CDEC-SING's Internal Regulations.

By law, discrepancies that may arise within the CDEC-SING about matters defined in the regulations will be submitted to a panel of experts for a decision. The panel will consist of seven professionals: five engineers or bachelors in economic sciences, and two lawyers, all of them with extensive professional or academic experience. These experts will be appointed through a resolution of the Ministry of the Economy, Development and Reconstruction.

The Directorate of Operation and the Directorate of Tolls, in

turn, are defined as primarily technical and executive structures, carrying out their activities in agreement with the general criteria issued by the Board of Directors.

Among other functions, the Directorate of Operation is charged with:

- a) Setting, coordinating and checking the system's power reserve; coordinating load disconnection; and taking any other steps needed by the system's generating and transmission units to maintain overall service reliability.
- b) Planning short, medium and long-term operation, in addition to coordinating maintenance of the SING's generating units and transmission lines, and duly notifying the Dispatch and Control Center of such plans.



- c) Supervising compliance with the schedules contained in operation plans, tracking deviations and their causes, and correcting undesired deviations.
- d) Calculating firm power for each generating plant and checking relevant balances for each generating company.
- e) Calculating instantaneous marginal costs of electric energy for all SING nodes.
- f) Determining on a monthly basis the earnings yielded by each stretch of the transmission system, and valuing power transfers in line with the stipulated procedures.

Among other functions, the Directorate of Tolls is charged with:

- a) Submitting to the Board of Directors for their review, the decisions and procedures aimed at guaranteeing open access to the trunk transmission and subtransmission systems that are interconnected within the SING.
- b) Projecting capacity and use as specified by the regulations.
- c) Calculating transmission costs to be paid by the corresponding companies.
- d) Announcing an open international invitation to tender

for trunk transmission system expansion projects, examining the bids, announcing the winning bid and informing the relevant agencies. Additionally, performing an annual consistency analysis of development and expansion facilities. The CDEC-SING Dispatch and Control Center, located in Antofagasta, is responsible for coordinating real-time operation not only for the system as a whole, but also for each generating unit and transmission line.

CDEC-SING MEMBER COMPANIES

In accordance with SD N°6/1985, which was in effect when the CDEC-SING was incorporated but is now repealed, electric companies with an installed generating capacity exceeding the CDEC-SING's total installed capacity by 2 percent at the time of its creation were entitled to join. Also eligible were selfproducers with an installed generation capacity that under normal conditions would surpass the sum of their peak annual demand or 2 percent of the system's installed power at the time.



CDEC-SING'S TASK AND RESPONSABILITIES

When the CDEC-SING was incorporated, the system had an installed power of 745.1 MW, so the minimum installed power required for membership totaled 14.90 MW.

SD No. 327 added other companies to the CDEC-SING as well: those whose main line of business was the management of electric power transmission systems with a voltage level equal to or higher than 23 kV, and at least one stretch of line measuring more than 100 km in length. Likewise, membership was extended to electric power companies with an installed generating capacity of over 9 MW.

SING ECONOMIC OPERATION

The SING economic operation gives priority to units with lower variable output cost.

A generating unit's variable output cost is defined as the specific fuel consumption times fuel price, plus the non-fuel variable cost that may be attributed mainly to space parts, chemical additives and lubricants.

To be able to compare the generating cost of each generating unit, a table of variable cost prepared containing the variable cost of each generating unit referred to system load center or

basic node, by using factors that consider the transmission grid's marginal losses (penalty factors). The load center currently corresponds to the 220 kV CRUISE node.

The operation's planning and marginal cost calculation is carried out weekly, giving origin to a generation program which considers hourly demand, generating unit and transmission system maintenance, and the technical limitations of the generating units, among which are maximum and minimum power limits, commissioning time, and minimum time the system is in service.

The CDEC-SING Dispatch and Control Center carries out real-time coordination of daily program execution with system member companies, implementing real-time corrections to the operation, which are needed to absorb the variations or deviations to the original program.





Facilities
Background of
CDEC - SING

SING GENERATING UNITS

| Owner | Name of Power Plant | Unit | N° of Comports | Total Gross Power [MW] | |
|--|--|--------------|----------------|------------------------|------|
| Celta | Tarapacá Thermoelectric | TGTAR (1) | 1 | 23.75 | |
| | | CTTAR | 1 | 158.00 | |
| Edelnor | Chapiquiña | CHAP | 2 | 10.20 | |
| | | Diesel Arica | M1AR | 3 | 3.00 |
| | | | M2AR | 2 | 2.92 |
| | | | GMAR | 4 | 8.40 |
| | Diesel Iquique | SUIQ | 3 | 4.20 | |
| | | MIIQ | 2 | 2.92 | |
| | | MAIQ | 1 | 5.94 | |
| | | TGIQ | 1 | 23.75 | |
| | | MSIQ | 1 | 6.20 | |
| | Diesel Antofagasta | MAAN | 2 | 11.87 | |
| | | GMAN | 8 | 16.80 | |
| | Mejillones Thermoelectric | CTM1 | 1 | 165.90 | |
| | | CTM2 | 1 | 175.00 | |
| | | CTM3 | 2 | 250.75 | |
| | Diesel Mantos Blancos (2) Cavanca (3) | MIMB | 10 | 28.64 | |
| CAVA | | 1 | 2.60 | | |
| Electroandina | Tocopilla Thermoelectric | U09 (6) | 1 | 45.00 | |
| | | U10 | 1 | 37.50 | |
| | | U11 | 1 | 37.50 | |
| | | U12 | 1 | 85.30 | |
| | | U13 | 1 | 85.50 | |
| | | U14 | 1 | 128.30 | |
| | | U15 | 1 | 130.30 | |
| | | U16 | 2 | 400.00 | |
| | | TG1 | 1 | 24.70 | |
| | | TG2 | 1 | 24.93 | |
| | | TG3 (4) | 1 | 37.50 | |
| AES Gener | Salta | CC SALTA | 3 | 642.80 | |
| Gasatacama Generación | Atacama | CC1 | 3 | 395.90 | |
| | | CC2 | 3 | 384.70 | |
| | Diesel Enaex (5) | DEUTZ | 3 | 1.96 | |
| | | CUMMINS | 1 | 0.72 | |
| Norgener | Norgener Thermoelectric | NTO1 | 1 | 136.30 | |
| | | NTO2 | 1 | 141.04 | |
| TOTAL SYSTEM OF 31 DECEMBER OF 2004 | | | | 3,595.79 | |

Notes: The following abbreviations will be used on tables and charts for the names of the companies:

Celta: Celta S.A.

Edelnor: Edelnor S.A.

Electroandina: Electroandina S.A.

AES Gener: AES Gener S.A.

Gasatacama: Gasatacama Generación S.A.

Norgener: Norgener S.A.

Transelec Norte: HQI Transelec Norte S.A.

| Injection Bars | Type of Unit | Year of put into Service |
|----------------------|-------------------------------|--------------------------|
| Tarapacá 220 kV | Diesel Turbogas | 1998 |
| Tarapacá 220 kV | Steam - Coal | 1999 |
| Arica 66 kV | Heavy hidro | 1967 |
| Arica 66 kV | Diesel Motor | 1953 |
| Arica 66 kV | Diesel Motor | 1961-63 |
| Arica 66 kV | Diesel Motor | 1973 |
| Iquique 66 kV | Diesel Motor | 1957 |
| Iquique 66 kV | Diesel Motor | 1963-64 |
| Iquique 66 kV | Motor FO 6 | 1972 |
| Iquique 66 kV | Diesel Turbogas | 1978 |
| Iquique 66 kV | Motor FO 6 | 1985 |
| Antofagasta 13,8 kV | Motor FO 6 | 1970 |
| Antofagasta 13,8 kV | Diesel Motor | 1971-74-76 |
| Chacaya 220 kV | Steam - Coal | 1995 |
| Chacaya 220 kV | Steam - Coal | 1998 |
| Chacaya 220 kV | Natural Gas Combined Cycle | 2000 |
| Mantos Blancos 23 kV | Motor FO 6 | 1995 |
| Iquique 66 kV | Heavy hidro | 1995 |
| Tocopilla 110 kV | FO 6 - Steam | 1960 |
| Tocopilla 110 kV | FO 6 - Steam | 1970 |
| Tocopilla 110 kV | FO 6 - Steam | 1970 |
| Tocopilla 110 kV | Steam - Coal | 1983 |
| Tocopilla 110 kV | Steam - Coal | 1985 |
| Tocopilla 220 kV | Steam - Coal | 1987 |
| Tocopilla 220 kV | Steam - Coal | 1990 |
| Tocopilla 220 kV | Natural Gas Combined Cycle | 2001 |
| Tocopilla 110 kV | Diesel Turbogas | 1975 |
| Tocopilla 110 kV | Diesel Turbogas | 1975 |
| Tocopilla 220 kV | Natural Gas Turbogas - Diesel | 1993 |
| Salta 345 kV | Natural Gas Combined Cycle | 2000 |
| Atacama 220 kV | Natural Gas Combined Cycle | 1999 |
| Atacama 220 kV | Natural Gas Combined Cycle | 1999 |
| Enaex 110 kV | Diesel Motor | 1996 |
| Enaex 110 kV | Diesel Motor | 1996 |
| Norgener 220 kV | Steam - Coal | 1995 |
| Norgener 220 kV | Steam - Coal | 1997 |

(1) The Power plant belonged to Endesa during the January-November 1999 period. It was transferred to the SING after May 12, 1999, and it was subsequently reintegrated to the SING on November 29, 1999, in hands of Celta.

(2) The Mantos Blancos Diesel power plant its represented in the CDEC-SING by Edelnor.

(3) The Cavanca power plant is represented in the CDEC-SING by Edelnor.

(4) The Gas Turbine is available to operate with natural gas as from September 2000.

(5) The Enaex Diesel power plant is represented in the CDEC-SING by Gasatacama.

SING TRANSMISSION LINES

| TRANSMISSIONS LINES OF CDEC-SING MEMBER COMPANIES | | | | | | |
|---|----------------------------------|--------------|-------------|-------------------|----------------|-----------------------|
| Owner | Transmission Lines | Voltage (kV) | N° Circuits | Aprox. Lengh (km) | Capacity (MVA) | Year put into service |
| Edelnor | Lagunas - Pozo Almonte | 220 | 1 | 70.0 | 328 | 1987 |
| | Crucero - Lagunas 1 | 220 | 1 | 174.0 | 328 | 1987 |
| | Chacaya - Crucero | 220 | 1 | 152.7 | 328 | 1987 |
| | Chacaya - Mejillones | 220 | 1 | 1.3 | 377 | 1987 |
| | Chacaya - Mantos Blancos | 220 | 1 | 66.0 | 377 | 1995 |
| | Chacaya - Mejillones | 110 | 1 | 1.4 | 122 | 1995 |
| | Arica - Pozo Almonte | 110 | 1 | 216.0 | 35 | 1987 |
| | Mejillones - Antofagasta | 110 | 1 | 63.3 | 80 | 1987 |
| | Km6 - Calama | 110 | 1 | 14.0 | 69 | 1982 |
| | Capricornio - Alto Norte | 110 | 1 | 41.0 | 137 | 2000 |
| | Capricornio - Antofagasta | 110 | 1 | 28.0 | 137 | 2000 |
| | Chapiquiña - Arica | 66 | 1 | 84.0 | 48 | 1967 |
| | Diesel Arica - Arica | 66 | 1 | 6.8 | 41 | 1974 |
| | Iquique - Pozo Almonte 1 | 66 | 1 | 42.4 | 41 | 1970 |
| | Iquique - Pozo Almonte 2 | 66 | 1 | 41.0 | 56 | 1987 |
| | Pozo Almonte-Tamarugal | 66 | 1 | 20.8 | 10 | 1968 |
| | Central Diesel Iquique - Iquique | 66 | 1 | 1.6 | 48 | 1970 |
| Electroandina | Tocopilla - Crucero | 220 | 2 | 71.4x2 | 330x2 | 1986 |
| | Crucero - Chuquicamata | 220 | 2 | 68x2 | 330x2 | 1986 |
| | Crucero - El Abra | 220 | 1 | 101.0 | 330 | 1995 |
| | Crucero - Radomiro Tomic | 220 | 1 | 82.0 | 450 | 1996 |
| | Tocopilla - Chuquicamata 1 | 110 | 1 | 141.0 | 90 | 1910 |
| | Tocopilla - Chuquicamata 2 | 110 | 1 | 141.0 | 90 | 1910 |
| | Tocopilla - Chuquicamata 3 | 110 | 1 | 141.0 | 90 | 1915 |
| | Tocopilla - Km6 | 110 | 1 | 152.0 | 90 | 1982 |
| AES Gener | Salta - Andes | 345 | 1 | 408.0 | 777 | 1999 |
| | Andes - Oeste | 220 | 1 | 38.0 | 290 | 1999 |
| | Andes - Nueva Zaldívar | 220 | 2 | 63.3x2 | 370x2 | 1999 |
| | Laberinto - Mantos Blancos | 220 | 1 | 70.0 | 290 | 1999 |
| Norgener | Norgener - Crucero | 220 | 2 | 72x2 | 948 | 1997 |
| | Laberinto - Oeste | 220 | 1 | 85.0 | 290 | 1998 |
| | Laberinto - Lomas Bayas | 220 | 1 | 10.0 | 209 | 1997 |
| | Oeste - Minsal | 110 | 1 | 33.0 | 50 | 1997 |
| Transelect Norte | Atacama - Encuentro | 220 | 2 | 153x2 | 416x2 | 1999 |
| | Atacama - Esmeralda | 220 | 1 | 70.0 | 189 | 2001 |
| | Crucero - Encuentro 1 | 220 | 1 | 0.8 | 404 | 1999 |
| | Crucero - Encuentro 2 | 220 | 1 | 0.8 | 404 | 2000 |
| | Crucero - Lagunas 2 | 220 | 1 | 173.2 | 183 | 1998 |
| | Tarapacá - Lagunas | 220 | 2 | 56x2 | 200x2 | 1998 |
| | Tarapacá - Cóndores | 220 | 1 | 70.0 | 189 | 2002 |
| | Cóndores - Parinacota | 220 | 1 | 225.0 | 189 | 2002 |
| Total Lines in 66 kV | | | | 196.6 | 244 | |
| Total Lines in 110 kV | | | | 971.7 | 990 | |
| Total Lines in 220 kV | | | | 2,357.2 | 9,412 | |
| Total Lines in 345 kV | | | | 408.0 | 777 | |
| Total CDEC-SING Companies | | | | 3,933.5 | 11,423 | |

OTHERS OWNER TRANSMISSION LINES

| Owner | Transmission Lines | Voltage (kV) | N° Circuits | Aprox. Legth (km) | Capacity (MVA) | Year Put into service |
|-------------------------------|-----------------------------------|--------------|-------------|-------------------|----------------|-----------------------|
| Minera Zaldívar | Crucero - Laberinto | 220 | 1 | 133.0 | 330 | 1994 |
| | Laberinto - Nueva Zaldívar | 220 | 1 | 75.0 | 330 | 1994 |
| | Nueva Zaldivar - Zaldivar | 220 | 1 | 0.2 | 360 | 1994 |
| Minera Escondida | Crucero - Escondida | 220 | 1 | 236.0 | 270 | 1995 |
| | Atacama - O'Higgins | 220 | 1 | 73.0 | 163 | 2003 |
| | O'Higgins - Domeyko | 220 | 1 | 128.0 | 180 | 1999 |
| | O'Higgins - Coloso | 220 | 1 | 32.0 | 163 | 1993 |
| | Atacama - Domeyko | 220 | 2 | 205x2 | 406 | 1999 |
| | Domeyko - Escondida | 220 | 1 | 7.0 | 180 | 1999 |
| | Domeyko - Planta óxidos | 220 | 1 | 1.0 | 100 | 1998 |
| | Zaldivar - Escondida | 220 | 1 | 14.0 | 300 | 1995 |
| Minera Collahuasi | Lagunas - Collahuasi 1 (Ver Nota) | 220 | 1 | 118.0 | 180 | 1996 |
| | Lagunas - Collahuasi 2 (Ver Nota) | 220 | 1 | 118.0 | 180 | 1998 |
| | Encuentro - Collahuasi | 220 | 1 | 201.0 | 109 | 2004 |
| Minera Quebrada Blanca | Collahuasi - Quebrada Blanca | 220 | 1 | 18.0 | 180 | 2002 |
| Minera El Tesoro | Encuentro - El Tesoro | 220 | 1 | 90.0 | 125 | 2000 |
| Planta Molycop | Chacaya - Molycop | 220 | 1 | 0.8 | 291 | 2004 |
| Fundición Alto Norte | Antofagasta - Alto Norte | 110 | 1 | 24.0 | 122 | 1993 |
| Minera Michilla | Mejillones - El Lince | 110 | 1 | 72.0 | 30 | 1991 |
| Minera Cerro Colorado | Pozo Almonte - Cerro Colorado | 110 | 1 | 61.0 | 164 | 1993 |
| Minera Meridian | Palestina - El Peñón | 66 | 1 | 63.0 | 60 | 1999 |
| Minera La Cascada | Pozo Almonte - La Cascada | 66 | 1 | 55.0 | 5 | 1971 |
| Transemel | Esmeralda - La Portada | 110 | 1 | 16.9 | 73 | 2001 |
| | Esmeralda - Centro | 110 | 1 | 0.6 | 73 | 2001 |
| | Esmeralda - Uribe | 110 | 1 | 16.2 | 73 | 2001 |
| | Esmeralda - Sur | 110 | 1 | 5.8 | 73 | 2002 |
| | Cóndores - Alto Hospicio | 110 | 1 | 2.7 | 80 | 2002 |
| | Alto Hospicio - Dragón | 110 | 1 | 2.2 | 80 | 2002 |
| | Cóndores - Palafitos | 110 | 1 | 8.6 | 73 | 2002 |
| | Cóndores - Pacifico | 110 | 1 | 10.4 | 73 | 2002 |
| | Parinacota - Quiani | 66 | 1 | 3.9 | 44 | 2002 |
| | Parinacota - Chinchorro | 66 | 1 | 3.5 | 44 | 2002 |
| Parinacota - Pukará | 66 | 1 | 3.6 | 44 | 2002 | |
| Total Lines in 66 kV | | | | 129.0 | 197 | |
| Total Lines in 110 kV | | | | 220.4 | 914 | |
| Total Lines in 220 kV | | | | 1,654.2 | 3,556 | |
| Total Other owner | | | | 2,003.6 | 4,667 | |
| Total SING | | | | 5,937.1 | 16,090 | |

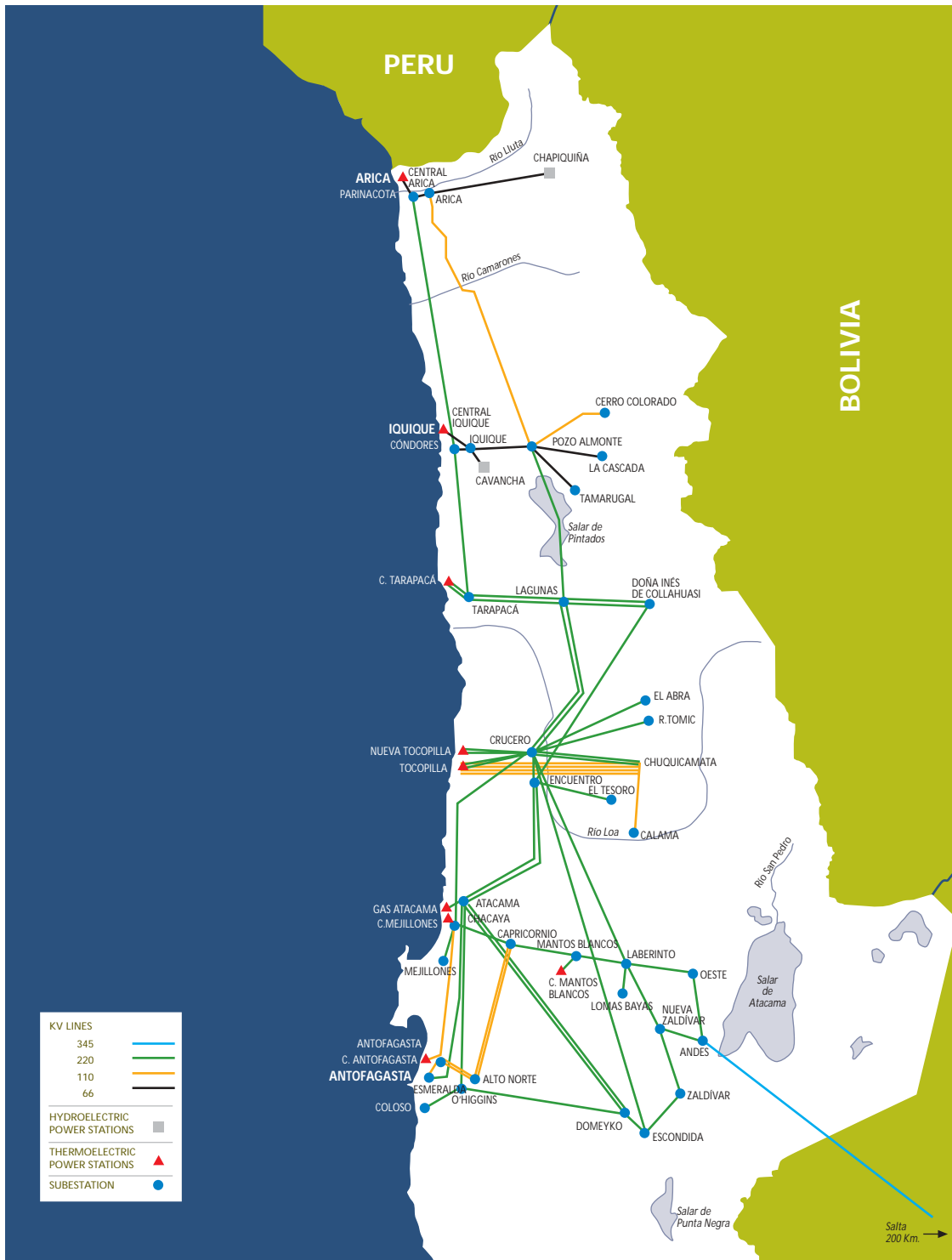
MAIN SING CLIENTS AS OF DECEMBER 2004

| CLIENT | CATEGORY | SUPPLY BAR | SUPPLIER |
|----------------------------|-------------|--|-----------------------|
| ACF Minera | Mining | Lagunas 220 kV | Celta |
| Cerro Colorado | Mining | Pozo Almonte 220 kV | Edelnor - Celta |
| Cia. Portuaria Mejillones | Industrial | Mejillones 23 kV | Edelnor |
| Collahuasi | Mining | Lagunas 220 kV | Celta |
| Cosayach | Mining | Pozo Almonte 66 kV | Edelnor |
| Chuquicamata | Mining | Crucero 220 kV - C.Tocopilla 110 kV | Electroandina |
| Desalant | Industrial | Antofagasta 110 kV | Edelnor |
| DSM Minera | Mining | Lagunas 220 kV | Celta |
| El Abra | Mining | Crucero 220 kV | Electroandina |
| El Peñón | Mining | C. Atacama 220 kV | Gasatacama |
| El Tesoro | Mining | Encuentro 220 kV | Gasatacama |
| Elecda | Distributor | Esmeralda 110 kV | Gasatacama |
| Eliqsa | Distributor | Cóndores 110 kV | Gasatacama |
| Emelari | Distributor | Parinacota 66 kV | Gasatacama |
| Enaex | Industrial | Mejillones 110 kV | Gasatacama |
| Escondida | Mining | Crucero 220 kV - C. Atacama 220 kV | Norgener - Gasatacama |
| Essat | Industrial | Pozo Almonte 66 kV - Tamarugal 66 kV - Arica 66 kV | Edelnor - Gasatacama |
| Inacesa | Industrial | Antofagasta 110 kV | Edelnor |
| Haldeman | Mining | Pozo Almonte 66 kV | Edelnor |
| Lipesed | Mining | Tocopilla 5 kV | Electroandina |
| Lomas Bayas | Mining | Laberinto 220 kV | AES Gener |
| Mantos Blancos | Mining | Mantos Blancos 220 kV | Edelnor |
| Michilla | Mining | Mejillones 110 kV | Edelnor |
| Molycop | Industrial | Chacaya 220 kV | Edelnor |
| Noranda | Industrial | Antofagasta 110 kV | Edelnor |
| Polpaico | Industrial | Mejillones 23 kV | Edelnor |
| Quebrada Blanca | Mining | Collahuasi 220 kV | Gasatacama |
| Quiborax | Mining | Arica 66 kV | Edelnor |
| Radomiro Tomic | Mining | Crucero 220 kV | Electroandina |
| Rayrock | Mining | Antofagasta 110 kV | Edelnor |
| Santa Margarita | Mining | Calama 100 kV | Electroandina |
| Sermob | Industrial | Antofagasta 23 kV | Edelnor |
| Sierra Miranda | Mining | Capricornio 23 kV | Edelnor |
| Sociedad Chilena del Litio | Industrial | Capricornio 23 kV | Edelnor |
| SQM El Loa | Mining | Crucero 220 kV | Electroandina |
| SQM Nitratos | Mining | Crucero 220 kV | Norgener |
| SQM Nva.Victoria | Mining | Lagunas 220 kV | Electroandina |
| SQM Salar | Mining | Laberinto 220 kV | Norgener |
| SQM Salar | Mining | El Negro 110 kV | Electroandina |
| Zaldivar | Mining | Laberinto 220 kV | AES Gener |

Note:

Edelnor supplies the withdrawal of 66 kV of Pozo Almonte as of December 2004.

SIMPLIFIED DIAGRAM OF SING - 2004



Source: HQI Transelec Chile S.A.

SING SIGNIFICANT EVENTS IN 2004

GENERATION AND TRANSMISSION PROJECTS

In June 2004, the 220 kV Encuentro–Collahuasi line, owned by Compañía Minera Doña Inés de Collahuasi, was put in service. The importance of this line is that it link the system at the Encuentro, Collahuasi and Lagunas area.

As announced by Electroandina, its U09 Unit was removed as from dispatch on December 10, 2004, since technical recovery was economically unfeasible.

OPERATION

The SING's annual gross generation totaled 12,330 GWh, which is broken down by fuels below:

- 61.5 % natural gas
- 37.3 % coal
- 0.6 % heavy oil and diesel oil
- 0,5 % hydro

Consumption growth over 2003 involved an increase of 7.9%

in gross energy generation, and of 7.2% in total energy sales.

In terms of types of customers, 90.0% are unregulated (industrial and mining companies), while 10% are regulated (distribution companies).

The system's peak demand occurred on December 19, at 11 pm, with a gross generation of 1,644 MW, up 12.1% from 2003.

Regarding continuity of supply, an earthquake occurred on January 23, 2004, whose epicenter was in the Second Region, resulted in the SING's only blackout since February 2000.

The regularly updated "Reliability Plan" that has been applied since late 1999 remained in place during 2004. In general, the Plan has allowed to reduce the impact of contingencies affecting generating units, transmission system elements and internal failures in customer installations, through operational actions and policies targeted at a reliable, economic supply.



Some of these actions and policies are listed below:

- To restrict the maximum injected power per generating unit.
- To perform load disconnections through low-frequency relays.
- To hold power reserves at operational units.

MISCELLANEOUS

Law No. 19.940, known as the Short-Law, became effective as from March 13, 2004. The Law amended Decree Law No. 1/82 with respect to, among other matters, the regulation of transmission systems; the description of the CDEC's corporate structures, including its Directorates of Operation and of Tolls; the supply of complementary services; and the creation of a new Experts Committee, one of whose functions is to solve discrepancies arising within the CDECs.

On June 16, 2004, the National Energy Commission delivered Exempt Resolution No. 306, dated June 15, 2004. This Resolution contained a favorable opinion about the text of the CDEC-SING's Internal Regulations – Procedures Manual No.

16, "Statement on the Prices of Fuels to be Used in the SING's Operation."

On July 12, 2004, the Court for the Defense of Free Competition reported the appointment of the Experts Committee members.

On September 16, 2004, the Official Gazette published Decree No. 181 of the Ministry of the Economy, Development and Reconstruction approving the Experts Committee Regulations. Decree No. 181 regulates the activities and duties of this new Committee.

Once the Experts Committee began to work, under the provisions of the Electricity Law, a Termination Agreement for the CDEC-SING's Experts Committee was entered into on September 17, 2004, by the CDEC-SING's Chairman of the Board and the Experts Committee members.

Once the Experts Committee began to work, under the provisions of the Electricity Law, a Termination Agreement for the CDEC-SING's Experts Committee was entered into on September 17, 2004, by the CDEC-SING's Chairman of the Board and the Experts Committee members.



On December 14, 2004, Board of Directors Agreement No. 302.1(E)/2004 was signed. The Agreement refers to the cancellation and withdrawal from the Ministry of the Economy, Development and Reconstruction of the records about discrepancies at Board meetings No. 205(E)/2001, No. 239/2003, No. 257(E)/2003 and No. 262(E)/2003.

Over 2004, two such discrepancies were reported to the Experts Committee for review. In addition, Exempt Resolutions No. 05, No. 19, No. 24 and No. 39 were received from the Ministry of the Economy Development and Reconstruction.

2004 relevants events in





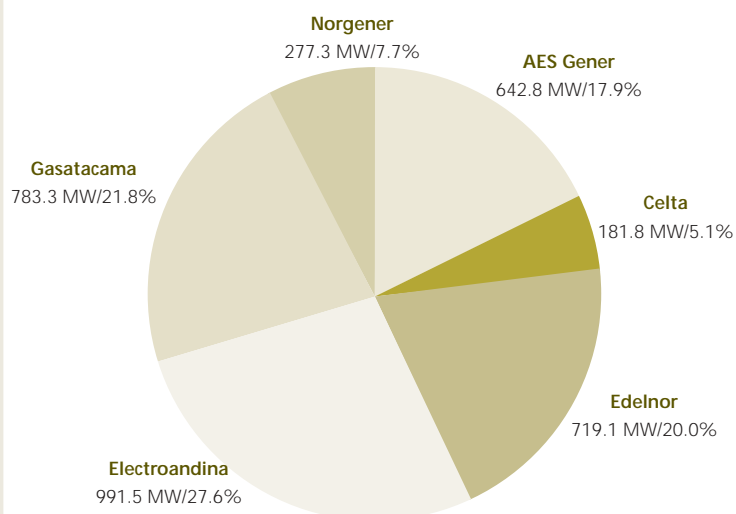
Operation Statistics
1995 / 2004
CDEC - SING



INSTALLED CAPACITY (MW) YEAR 2004

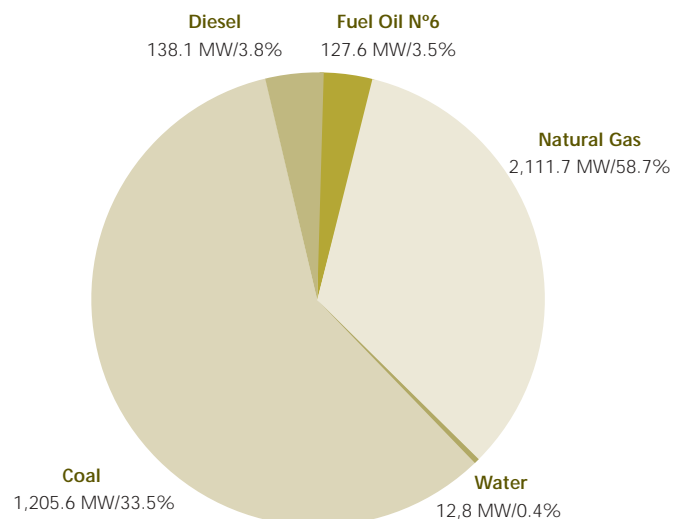
Installed Capacity per Company - Year 2004

Total 3,595.8 MW



Installed Capacity per Fuel - Year 2004

Total 3,595.8 MW



INSTALLED CAPACITY PER COMPANY 1995 - 2004 PERIOD

IN PHYSICAL UNITS (MW)

| Company \ Year | 1995 | 1996 | 1997 | 1998 | 1999 | 2000 | 2001 | 2002 | 2003 | 2004 |
|----------------|--------------|--------------|--------------|--------------|--------------|--------------|--------------|--------------|--------------|--------------|
| Celta | - | - | - | 24 | 158 | 182 | 182 | 182 | 182 | 182 |
| Edelnor | 294 | 297 | 297 | 472 | 472 | 722 | 722 | 719 | 719 | 719 |
| Electroandina | 629 | 629 | 629 | 629 | 629 | 629 | 1,029 | 1,029 | 1,037 | 992 |
| Endesa | 98 | 98 | 74 | 74 | 98 | - | - | - | - | - |
| AES Gener | - | - | - | - | 416 | 643 | 643 | 643 | 643 | 643 |
| Gasatacama | - | - | - | - | 588 | 588 | 588 | 783 | 783 | 783 |
| Norgener | 136 | 136 | 277 | 277 | 277 | 277 | 277 | 277 | 277 | 277 |
| TOTAL | 1,157 | 1,160 | 1,277 | 1,476 | 2,637 | 3,041 | 3,441 | 3,633 | 3,641 | 3,596 |

IN PERCENTAGES (%)

| Company \ Year | 1995 | 1996 | 1997 | 1998 | 1999 | 2000 | 2001 | 2002 | 2003 | 2004 |
|----------------|-------------|-------------|-------------|-------------|-------------|-------------|-------------|-------------|-------------|-------------|
| Celta | - | - | - | 1.6% | 6.0% | 6.0% | 5.3% | 5.0% | 5.0% | 5.1% |
| Edelnor | 25.4% | 25.6% | 23.2% | 32.0% | 17.9% | 23.8% | 21.0% | 19.8% | 19.8% | 20.0% |
| Electroandina | 54.4% | 54.2% | 49.3% | 42.6% | 23.8% | 20.7% | 29.9% | 28.3% | 28.5% | 27.6% |
| Endesa | 8.4% | 8.4% | 5.8% | 5.0% | 3.7% | - | - | - | - | - |
| AES Gener | - | - | - | - | 15.8% | 21.1% | 18.7% | 17.7% | 17.7% | 17.9% |
| Gasatacama | - | - | - | - | 22.3% | 19.3% | 17.1% | 21.6% | 21.5% | 21.8% |
| Norgener | 11.8% | 11.8% | 21.7% | 18.8% | 10.5% | 9.1% | 8.1% | 7.6% | 7.6% | 7.7% |
| TOTAL | 100% | 100% | 100% | 100% | 100% | 100% | 100% | 100% | 100% | 100% |

INSTALLED CAPACITY PER TYPE OF FUEL 1995 - 2004 PERIOD

IN PHYSICAL UNITS (MW)

| Fuel | Company | 1995 | 1996 | 1997 | 1998 | 1999 | 2000 | 2001 | 2002 | 2003 | 2004 |
|--------------------|---------------|--------------|--------------|--------------|--------------|--------------|--------------|--------------|--------------|--------------|--------------|
| Water | Edelnor | 13 | 13 | 13 | 13 | 13 | 13 | 13 | 13 | 13 | 13 |
| Subtotal | | 13 | 13 | 13 | 13 | 13 | 13 | 13 | 13 | 13 | 13 |
| Coal | Celta | | | | | 158 | 158 | 158 | 158 | 158 | 158 |
| | Edelnor | 166 | 166 | 166 | 341 | 341 | 341 | 341 | 341 | 341 | 341 |
| | Electroandina | 429 | 429 | 429 | 429 | 429 | 429 | 429 | 429 | 429 | 429 |
| | Norgener | 136 | 136 | 277 | 277 | 277 | 277 | 277 | 277 | 277 | 277 |
| Subtotal | | 732 | 732 | 873 | 1,048 | 1,206 | 1,206 | 1,206 | 1,206 | 1,206 | 1,206 |
| Diesel | Celta | | | | 24 | | 24 | 24 | 24 | 24 | 24 |
| | Edelnor | 62 | 65 | 65 | 65 | 65 | 65 | 62 | 62 | 62 | 62 |
| | Electroandina | 80 | 80 | 80 | 80 | 80 | 42 | 42 | 42 | 50 | 50 |
| | Endesa | 98 | 98 | 74 | 74 | 98 | | | | | |
| | Gasatacama | | | | | | | 3 | 3 | 3 | 3 |
| Subtotal | | 239 | 242 | 218 | 242 | 242 | 130 | 130 | 130 | 138 | 138 |
| Fuel Oil | Edelnor | 53 | 53 | 53 | 53 | 53 | 53 | 53 | 53 | 53 | 53 |
| | Electroandina | 120 | 120 | 120 | 120 | 120 | 120 | 120 | 120 | 120 | 75 |
| Subtotal | | 173 | 173 | 173 | 173 | 173 | 173 | 173 | 173 | 173 | 128 |
| Natural Gas | Edelnor | | | | | | 251 | 251 | 251 | 251 | 251 |
| | AES Gener | | | | | 416 | 643 | 643 | 643 | 643 | 643 |
| | Gasatacama | | | | | 588 | 588 | 588 | 781 | 781 | 781 |
| | Electroandina | | | | | | 38 | 438 | 438 | 438 | 438 |
| Subtotal | | 0 | 0 | 0 | 0 | 1,004 | 1,519 | 1,919 | 2,112 | 2,112 | 2,112 |
| TOTAL | | 1,156 | 1,159 | 1,276 | 1,475 | 2,637 | 3,040 | 3,440 | 3,633 | 3,641 | 3,596 |

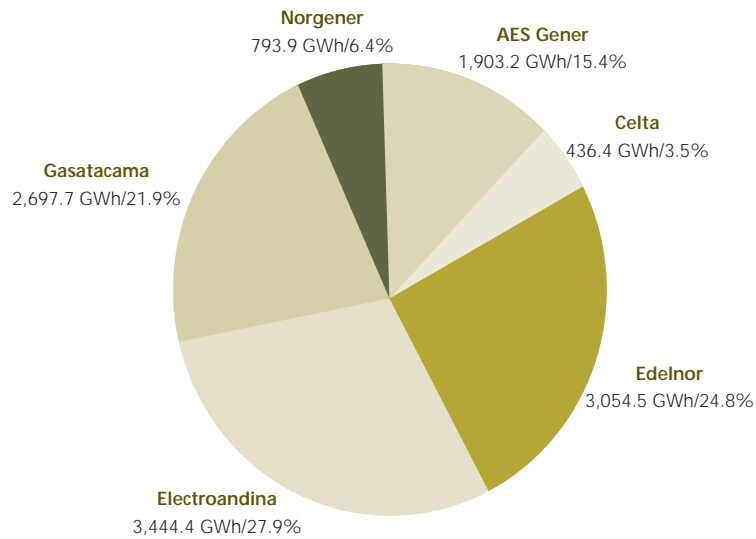
IN PERCENTAGES (%)

| Fuel | Company | 1995 | 1996 | 1997 | 1998 | 1999 | 2000 | 2001 | 2002 | 2003 | 2004 |
|--------------------|---------------|---------------|---------------|---------------|---------------|---------------|---------------|---------------|---------------|---------------|---------------|
| Water | Edelnor | 1.1% | 1.1% | 1.0% | 0.9% | 0.5% | 0.4% | 0.4% | 0.4% | 0.4% | 0.4% |
| Subtotal | | 1.1% | 1.1% | 1.0% | 0.9% | 0.5% | 0.4% | 0.4% | 0.4% | 0.4% | 0.4% |
| Coal | Celta | | | | | 6.0% | 5.2% | 4.6% | 4.3% | 4.3% | 4.4% |
| | Edelnor | 14.3% | 14.3% | 13.0% | 23.1% | 12.9% | 11.2% | 9.9% | 9.4% | 9.4% | 9.5% |
| | Electroandina | 37.1% | 37.1% | 33.6% | 29.1% | 16.3% | 14.1% | 12.5% | 11.8% | 11.8% | 11.9% |
| | Norgener | 11.8% | 11.8% | 21.7% | 18.8% | 10.5% | 9.1% | 8.1% | 7.6% | 7.6% | 7.7% |
| Subtotal | | 63.3% | 63.1% | 68.4% | 71.0% | 45.7% | 39.7% | 35.0% | 33.2% | 33.1% | 33.5% |
| Diesel | Celta | | | | 1.6% | | 0.8% | 0.7% | 0.7% | 0.7% | 0.7% |
| | Edelnor | 5.4% | 5.6% | 5.1% | 4.4% | 2.5% | 2.1% | 1.8% | 1.7% | 1.7% | 1.7% |
| | Electroandina | 6.9% | 6.9% | 6.2% | 5.4% | 3.0% | 1.4% | 1.2% | 1.2% | 1.4% | 1.4% |
| | Endesa | 8.5% | 8.4% | 5.8% | 5.0% | 3.7% | | | | | |
| | Gasatacama | | | | | | | 0.1% | 0.1% | 0.1% | 0.1% |
| Subtotal | | 20.7% | 20.9% | 17.1% | 16.4% | 9.2% | 4.3% | 3.8% | 3.6% | 3.8% | 3.8% |
| Fuel Oil | Edelnor | 4.6% | 4.5% | 4.1% | 3.6% | 2.0% | 1.7% | 1.5% | 1.4% | 1.4% | 1.5% |
| | Electroandina | 10.4% | 10.4% | 9.4% | 8.1% | 4.6% | 3.9% | 3.5% | 3.3% | 3.3% | 2.1% |
| Subtotal | | 14.9% | 14.9% | 13.5% | 11.7% | 6.5% | 5.7% | 5.0% | 4.8% | 4.7% | 3.5% |
| Natural Gas | Edelnor | | | | | | 8.2% | 7.3% | 6.9% | 6.9% | 7.0% |
| | AES Gener | | | | | 15.8% | 21.1% | 18.7% | 17.7% | 17.7% | 17.9% |
| | Gasatacama | | | | | 22.3% | 19.3% | 17.1% | 21.5% | 21.4% | 21.7% |
| | Electroandina | | | | | | 1.2% | 12.7% | 12.0% | 12.0% | 12.2% |
| Subtotal | | | | | | 38.1% | 50.0% | 55.8% | 58.1% | 58.0% | 58.7% |
| TOTAL | | 100.0% | 100.0% | 100.0% | 100.0% | 100.0% | 100.0% | 100.0% | 100.0% | 100.0% | 100.0% |

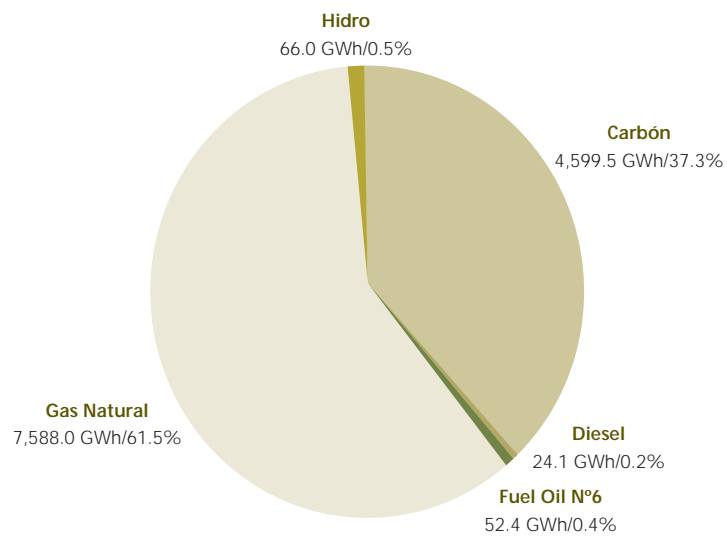
Note: Electroandina TG3 unit will operate with natural gas as from the year 2000.

GROSS GENERATION YEAR 2004

Gross Generation per Company - Year 2004
Total 12,330.0 GWh



Gross Generation per Fuel - Year 2004
Total 12,330.0 GWh



GENERATION OF SING POWER PLANTS (GWh) - YEAR 2004

| | JAN | FEB | MAR | APR | MAY | JUNE | JULY | AUG | SEPT | OCT | NOV | DEC | ANNUAL |
|-------------------------------|--------------|--------------|--------------|--------------|--------------|--------------|--------------|--------------|--------------|--------------|--------------|--------------|----------------|
| CELTA | | | | | | | | | | | | | |
| CTTAR | 25.5 | 39.8 | 16.3 | 58.2 | 82.0 | 37.7 | 12.1 | 54.4 | 11.2 | 39.1 | 45.2 | 13.4 | 434.9 |
| TGTAR | 0.4 | 0.0 | 0.0 | 0.1 | 0.1 | 0.0 | 0.0 | 0.0 | 0.1 | 0.0 | 0.0 | 0.5 | 1.5 |
| Total Gross Generation | 25.9 | 39.8 | 16.4 | 58.3 | 82.1 | 37.7 | 12.1 | 54.5 | 11.3 | 39.2 | 45.2 | 13.9 | 436.4 |
| Own Consumption | 2.4 | 3.7 | 1.6 | 5.4 | 7.5 | 2.3 | 1.1 | 4.6 | 1.1 | 3.6 | 4.3 | 1.3 | 38.7 |
| Total Net Generation | 23.5 | 36.1 | 14.8 | 52.9 | 74.6 | 35.4 | 11.1 | 49.9 | 10.2 | 35.6 | 41.0 | 12.7 | 397.7 |
| EDELNOR | | | | | | | | | | | | | |
| CHAP | 5.5 | 5.6 | 3.1 | 4.1 | 4.3 | 4.0 | 3.6 | 3.9 | 4.0 | 4.4 | 4.1 | 4.2 | 50.7 |
| CAVA | 1.4 | 1.3 | 1.3 | 1.2 | 1.3 | 1.2 | 1.2 | 1.2 | 1.2 | 1.3 | 1.3 | 1.3 | 15.2 |
| Arica Power Plant | 0.6 | 0.1 | 0.1 | 0.9 | 1.2 | 0.3 | 0.3 | 0.4 | 0.5 | 0.3 | 0.2 | 0.2 | 4.7 |
| Iquique Power Plant | 1.6 | 0.3 | 0.8 | 1.2 | 1.3 | 0.4 | 0.5 | 1.4 | 0.8 | 0.5 | 0.7 | 1.2 | 10.7 |
| Antofagasta Power Plant | 0.9 | 0.1 | 0.2 | 1.2 | 1.8 | 0.5 | 0.4 | 0.5 | 0.9 | 0.3 | 0.4 | 0.2 | 7.3 |
| MIMB | 1.2 | 0.1 | 1.1 | 2.8 | 3.7 | 1.3 | 0.8 | 1.7 | 1.1 | 0.7 | 0.8 | 0.5 | 15.8 |
| CTM1 | 35.4 | 0.0 | 59.2 | 3.8 | 87.1 | 57.1 | 73.6 | 104.2 | 62.5 | 0.0 | 15.6 | 0.0 | 498.7 |
| CTM2 | 66.6 | 101.8 | 35.1 | 102.1 | 89.9 | 106.0 | 111.3 | 68.2 | 31.9 | 103.8 | 88.5 | 97.3 | 1,002.6 |
| CTM3 | 124.9 | 141.9 | 157.7 | 128.5 | 55.7 | 106.6 | 47.9 | 77.6 | 150.0 | 160.0 | 155.2 | 142.8 | 1,448.8 |
| Total Gross Generation | 238.0 | 251.1 | 258.6 | 245.8 | 246.1 | 277.4 | 239.5 | 259.2 | 252.9 | 271.2 | 266.7 | 247.7 | 3,054.5 |
| Own Consumption | 12.3 | 12.3 | 12.3 | 12.9 | 15.3 | 15.8 | 14.7 | 14.4 | 12.0 | 13.5 | 14.0 | 12.7 | 158.7 |
| Total Net Generation | 225.7 | 238.8 | 246.3 | 233.0 | 230.9 | 261.6 | 224.7 | 244.8 | 240.9 | 257.8 | 252.8 | 235.0 | 2,895.7 |
| ELECTROANDINA | | | | | | | | | | | | | |
| U09 | 0.0 | 0.0 | 0.0 | 0.0 | 0.0 | 0.0 | 0.0 | 0.0 | 0.0 | 0.0 | 0.0 | 0.0 | 0.0 |
| U10 | 0.0 | 0.0 | 0.0 | 0.0 | 1.6 | 0.1 | 0.0 | 0.0 | 0.0 | 0.0 | 1.1 | 2.1 | 4.9 |
| U11 | 0.0 | 0.0 | 0.0 | 0.0 | 0.0 | 0.0 | 0.0 | 0.0 | 0.0 | 0.0 | 1.0 | 0.9 | 2.0 |
| U12 | 40.2 | 14.4 | 10.3 | 6.4 | 29.8 | 26.9 | 8.3 | 18.8 | 3.3 | 9.2 | 4.5 | 13.2 | 185.2 |
| U13 | 17.0 | 40.2 | 8.6 | 51.7 | 32.3 | 31.1 | 15.1 | 31.1 | 9.5 | 10.9 | 28.1 | 17.1 | 292.6 |
| U14 | 0.0 | 22.1 | 80.8 | 76.9 | 80.7 | 30.7 | 75.7 | 82.0 | 43.7 | 76.0 | 71.7 | 22.2 | 662.6 |
| U15 | 42.4 | 62.4 | 45.5 | 78.0 | 83.5 | 70.9 | 56.0 | 78.1 | 42.8 | 67.3 | 61.1 | 58.3 | 746.5 |
| U16 | 120.0 | 123.7 | 162.9 | 161.9 | 133.6 | 170.0 | 159.3 | 28.3 | 164.0 | 57.0 | 10.7 | 166.6 | 1,457.8 |
| TG1 | 0.3 | 0.1 | 0.0 | 0.0 | 0.0 | 0.0 | 0.0 | 0.0 | 0.1 | 0.2 | 0.0 | 0.6 | 1.4 |
| TG2 | 0.3 | 0.0 | 0.0 | 0.1 | 0.0 | 0.0 | 0.0 | 0.0 | 0.1 | 0.0 | 0.0 | 0.3 | 0.8 |
| TG3 | 2.6 | 0.9 | 7.7 | 0.8 | 1.0 | 1.0 | 14.5 | 17.7 | 1.1 | 16.0 | 19.3 | 8.0 | 90.6 |
| Total Gross Generation | 222.9 | 263.8 | 315.8 | 375.6 | 362.5 | 330.7 | 328.9 | 256.1 | 264.6 | 236.6 | 197.6 | 289.4 | 3,444.4 |
| Own Consumption | 11.1 | 15.5 | 16.4 | 20.1 | 20.6 | 17.0 | 17.0 | 17.1 | 13.8 | 15.2 | 14.7 | 15.7 | 194.1 |
| Total Net Generation | 211.8 | 248.3 | 299.4 | 355.5 | 341.9 | 313.7 | 311.8 | 239.0 | 250.8 | 221.4 | 182.9 | 273.6 | 3,250.3 |

GENERATION OF SING POWER PLANTS (GWh) - YEAR 2004

| | ENE | FEB | MAR | APR | MAY | JUNE | JULY | AUG | SEPT | OCT | NOV | DEC | ANNUAL |
|--------------------------------|--------------|--------------|---------------|--------------|----------------|----------------|----------------|----------------|----------------|----------------|----------------|----------------|-----------------|
| AES GENER | | | | | | | | | | | | | |
| Salta Power Plant | 172.2 | 152.1 | 169.1 | 68.4 | 130.0 | 158.1 | 178.5 | 168.8 | 160.1 | 183.3 | 178.0 | 184.4 | 1,903.2 |
| Total Gross Generation | 172.2 | 152.1 | 169.1 | 68.4 | 130.0 | 158.1 | 178.5 | 168.8 | 160.1 | 183.3 | 178.0 | 184.4 | 1,903.2 |
| Own Consumption | 4.3 | 3.7 | 3.9 | 2.5 | 3.0 | 3.2 | 3.5 | 3.5 | 3.6 | 4.0 | 4.0 | 4.3 | 43.3 |
| Total Net Generation | 167.9 | 148.5 | 165.2 | 66.0 | 127.0 | 154.9 | 175.0 | 165.3 | 156.5 | 179.3 | 174.0 | 180.2 | 1,859.8 |
| GASATACAMA | | | | | | | | | | | | | |
| CC1 | 126.4 | 112.9 | 120.6 | 41.5 | 0.6 | 55.0 | 120.9 | 121.9 | 117.2 | 112.9 | 117.7 | 119.9 | 1,167.7 |
| CC2 | 149.1 | 115.0 | 122.6 | 89.2 | 73.5 | 106.9 | 124.7 | 132.1 | 197.1 | 138.8 | 150.0 | 131.1 | 1,530.0 |
| ENAEX | 0.0 | 0.0 | 0.0 | 0.0 | 0.0 | 0.0 | 0.0 | 0.0 | 0.0 | 0.0 | 0.0 | 0.0 | 0.0 |
| Total Gross Generation | 275.5 | 227.9 | 243.2 | 130.7 | 74.1 | 161.9 | 245.6 | 254.1 | 314.3 | 251.7 | 267.6 | 251.1 | 2,697.7 |
| Own Consumption | 8.0 | 6.7 | 8.2 | 6.7 | 5.1 | 5.9 | 6.7 | 7.0 | 7.8 | 6.7 | 7.0 | 6.7 | 82.3 |
| Total Net Generation | 267.6 | 221.2 | 235.0 | 124.0 | 69.0 | 156.0 | 238.9 | 247.0 | 306.6 | 245.1 | 260.6 | 244.4 | 2,615.4 |
| NORGENER | | | | | | | | | | | | | |
| NTO1 | 1.9 | 0.0 | 0.0 | 40.8 | 60.9 | 18.0 | 1.8 | 19.4 | 0.0 | 23.4 | 10.0 | 39.4 | 215.7 |
| NTO2 | 13.3 | 6.8 | 0.0 | 68.3 | 66.6 | 44.4 | 60.5 | 66.3 | 24.2 | 64.6 | 81.3 | 81.9 | 578.2 |
| Total Gross Generation | 15.2 | 6.8 | 0.0 | 109.1 | 127.5 | 62.4 | 62.3 | 85.7 | 24.2 | 88.0 | 91.3 | 121.3 | 793.9 |
| Own Consumption | 1.5 | 0.7 | 0.0 | 8.8 | 9.6 | 5.6 | 5.6 | 7.5 | 2.4 | 6.8 | 8.3 | 9.7 | 66.5 |
| Total Generación Neta | 13.7 | 6.1 | 0.0 | 100.3 | 117.9 | 56.8 | 56.7 | 78.2 | 21.8 | 81.2 | 83.0 | 111.6 | 727.4 |
| TOTAL SING | | | | | | | | | | | | | |
| Gross Generation | 949.7 | 941.5 | 1003.1 | 988.0 | 1,022.4 | 1,028.2 | 1,066.9 | 1,078.4 | 1,027.4 | 1,070.1 | 1,046.5 | 1,107.9 | 12,330.0 |
| Own Consumption | 39.6 | 42.5 | 43.2 | 56.3 | 61.1 | 49.8 | 48.6 | 54.1 | 40.5 | 49.7 | 52.2 | 50.5 | 583.7 |
| Net Generation | 910.1 | 899.0 | 960.8 | 931.6 | 961.3 | 978.4 | 1,018.2 | 1,024.3 | 986.9 | 1,020.4 | 994.3 | 1,057.4 | 11,746.3 |
| Own Consumption | 45.6 | 37.7 | 45.0 | 36.3 | 39.1 | 43.4 | 41.7 | 39.4 | 43.9 | 42.0 | 41.4 | 51.4 | 506.7 |
| Sales to non-regulated clients | 779.1 | 778.8 | 823.8 | 808.1 | 832.8 | 846.0 | 884.4 | 893.0 | 854.1 | 885.6 | 863.1 | 915.5 | 10,164.2 |
| Sales to regulated clients | 86.9 | 82.5 | 94.1 | 87.2 | 89.3 | 89.0 | 92.2 | 92.0 | 89.0 | 92.8 | 89.8 | 90.5 | 1,075.3 |
| Total Sales | 865.9 | 861.2 | 918.0 | 895.3 | 922.1 | 935.0 | 976.6 | 984.9 | 943.1 | 978.4 | 953.0 | 1,006.1 | 11,239.6 |

GENERATION OF SING POWER PLANTS (GWh) - 1995 - 2004 PERIOD

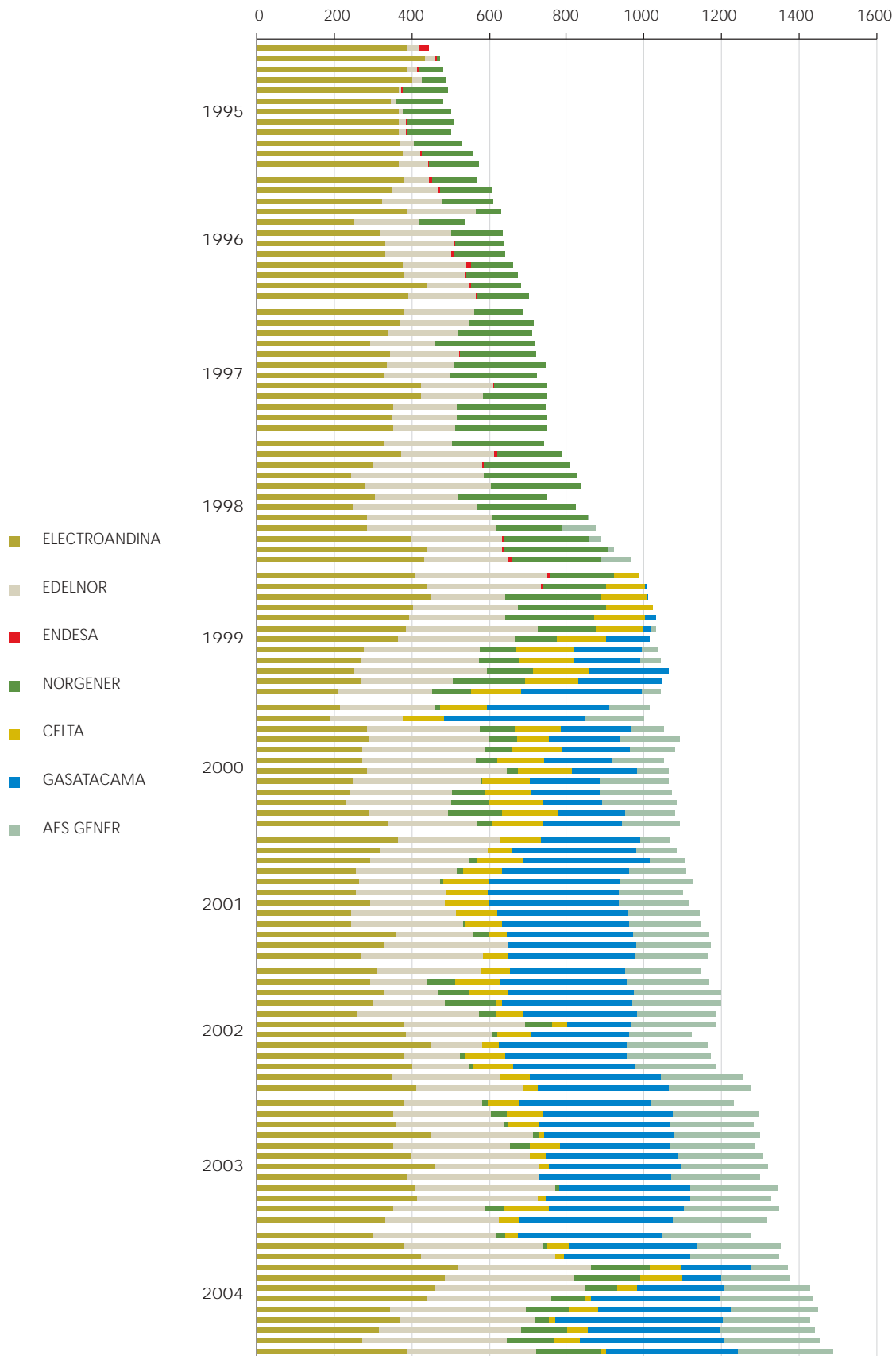
| | 1995 | 1996 | 1997 | 1998 | 1999 | 2000 | 2001 | 2002 | 2003 | 2004 |
|-------------------------------|--------------|--------------|--------------|--------------|--------------|--------------|--------------|--------------|--------------|--------------|
| CELTA | | | | | | | | | | |
| CTTAR | - | - | - | 145 | 1,083 | 1,061 | 760 | 639 | 435 | 435 |
| TGTAR | - | - | - | 11 | 0 | 17 | 3 | 1 | 1 | 1 |
| Total Gross Generation | - | - | - | 156 | 1,083 | 1,079 | 763 | 640 | 436 | 436 |
| Own Consumption | - | - | - | 12 | 82 | 84 | 67 | 61 | 40 | 39 |
| Total Net Generation | - | - | - | 143 | 1,001 | 994 | 696 | 579 | 397 | 398 |
| EDELNOR | | | | | | | | | | |
| CHAP | 36 | 35 | 42 | 35 | 46 | 43 | 53 | 54 | 51 | 51 |
| CAVA | 2 | 12 | 14 | 15 | 14 | 13 | 12 | 13 | 14 | 15 |
| Arica Power Plant | 25 | 20 | 17 | 15 | 22 | 6 | 5 | 2 | 1 | 5 |
| Iquique Power Plant | 70 | 74 | 57 | 52 | 62 | 31 | 14 | 8 | 6 | 11 |
| Antofagasta Power Plant | 58 | 51 | 38 | 55 | 58 | 8 | 5 | 2 | 2 | 7 |
| MIMB | 19 | 69 | 42 | 43 | 58 | 9 | 7 | 6 | 7 | 16 |
| ENAEX | - | - | - | - | - | - | - | - | - | - |
| CTM3 | - | - | - | - | 2 | 711 | 1,131 | 849 | 1,695 | 498.7 |
| CTM1 | 35 | 1,064 | 1,299 | 1,316 | 1,092 | 618 | 257 | 18 | 144 | 1,003 |
| CTM2 | - | - | - | 810 | 1,139 | 984 | 774 | 918 | 575 | 1,449 |
| Total Gross Generation | 245 | 1,325 | 1,510 | 2,341 | 2,493 | 2,424 | 2,257 | 1,870 | 2,495 | 3,054 |
| Own Consumption | 8 | 85 | 101 | 165 | 174 | 173 | 131 | 111 | 113 | 162 |
| Total Net Generation | 237 | 1,240 | 1,409 | 2,176 | 2,319 | 2,251 | 2,125 | 1,759 | 2,382 | 2,892 |
| ELECTROANDINA | | | | | | | | | | |
| U09 | 206 | 19 | 101 | 45 | 12 | - | - | - | - | - |
| U10 - U11 | 228 | 194 | 58 | 40 | 148 | 56 | 29 | 1 | - | 7 |
| U12 - U13 | 1,079 | 1,126 | 927 | 768 | 1,182 | 503 | 338 | 663 | 455 | 478 |
| U14 - U15 | 1,785 | 1,775 | 2,040 | 1,988 | 1,623 | 1,509 | 664 | 1,266 | 1,304 | 1,409 |
| U16 | - | - | - | - | - | 192 | 1,458 | 1,174 | 1,627 | 1,458 |
| TG1 - TG2 | 1 | 1 | 1 | 2 | 18 | 22 | 16 | 7 | 2 | 2 |
| TG3 | 2 | 16 | 8 | 19 | 20 | 32 | 43 | 4 | 11 | 91 |
| Total Gross Generation | 3,301 | 3,129 | 3,135 | 2,862 | 3,005 | 2,315 | 2,548 | 3,115 | 3,398 | 3,444 |
| Own Consumption | 244 | 225 | 223 | 204 | 208 | 178 | 139 | 199 | 198 | 194 |
| Total Net Generation | 3,057 | 2,904 | 2,912 | 2,658 | 2,797 | 2,137 | 2,409 | 2,917 | 3,201 | 3,250 |
| ENDESA (1) | | | | | | | | | | |
| TG Mej. 1 - 2 | 47 | 29 | 8 | 24 | - | - | - | - | - | - |
| TG Mej. 3 | 2 | 1 | - | - | - | - | - | - | - | - |
| TGTAR | - | - | - | - | 6 | - | - | - | - | - |
| Total Gross Generation | 49 | 30 | 8 | 24 | 6 | - | - | - | - | - |
| Own Consumption | - | - | - | - | - | - | - | - | - | - |
| Total Net Generation | 49 | 30 | 8 | 24 | 6 | - | - | - | - | - |

(1) In 1993 Endesa started operating two 74 MW capacity Gas Turbines in the Mejillones Substation, which were withdrawn from the SING as from January 3, 1999 to be transferred to the SIC. In 1995, Endesa STARTED OPERATING A 23.75 Mw capacity Gas Turbine in the Mejillones Substation, which was withdrawn from SING on January 1st, 1997. In 1998 it was reintegrated to The SING in the Tarapaca Substation as property of Celta S.A. under the name of TGTAR.

GENERATION OF SING POWER PLANTS (GWh) - 1995 - 2004 PERIOD

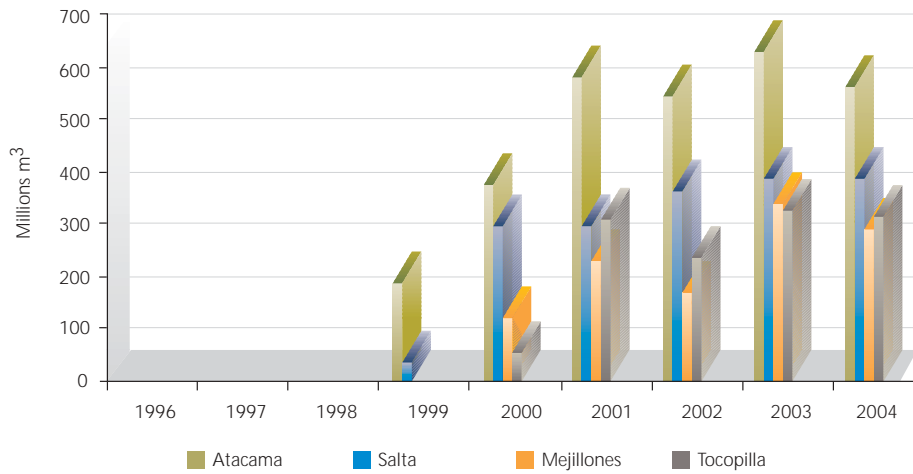
| | 1995 | 1996 | 1997 | 1998 | 1999 | 2000 | 2001 | 2002 | 2003 | 2004 |
|-------------------------------|--------------|--------------|--------------|--------------|--------------|--------------|--------------|---------------|---------------|---------------|
| AES GENER | | | | | | | | | | |
| TG11 | - | - | - | - | 102 | - | - | - | - | - |
| TG12 | - | - | - | - | 12 | - | - | - | - | - |
| Salta Power Plant | - | - | - | - | - | 1,217 | 1,386 | 1,813 | 1,950 | 1,903 |
| Total Gross Generation | - | - | - | - | 114 | 1,217 | 1,386 | 1,813 | 1,950 | 1,903 |
| Own Consumption | - | - | - | - | - | 27 | 35 | 45 | 46 | 43 |
| Total Net Generation | - | - | - | - | 114 | 1,191 | 1,351 | 1,768 | 1,904 | 1,860 |
| GASATACAMA | | | | | | | | | | |
| CC1 | - | - | - | - | 801 | 970 | 1,462 | 1,431 | 1,434 | 1,168 |
| CC2 | - | - | - | - | 116 | 812 | 1,368 | 1,216 | 1,568 | 1,530 |
| ENAEX | - | - | - | - | - | - | - | - | - | - |
| Total Gross Generation | - | - | - | - | 916 | 1,782 | 2,830 | 2,647 | 3,002 | 2,698 |
| Own Consumption | - | - | - | - | 39 | 70 | 91 | 77 | 82 | 82 |
| Total Net Generation | - | - | - | - | 877 | 1,711 | 2,739 | 2,570 | 2,920 | 2,615 |
| NORGENER | | | | | | | | | | |
| NTO1 | 809 | 1,061 | 856 | 1,016 | 526 | 264 | 1 | 63 | 16 | 216 |
| NTO2 | - | - | 883 | 960 | 858 | 246 | 67 | 252 | 126 | 578 |
| Total Gross Generation | 809 | 1,061 | 1,740 | 1,975 | 1,384 | 510 | 68 | 315 | 142 | 794 |
| Own Consumption | 61 | 75 | 120 | 133 | 109 | 52 | 7 | 32 | 14 | 66 |
| Total Net Generation | 749 | 986 | 1,620 | 1,843 | 1,275 | 458 | 61 | 283 | 128 | 727 |
| TOTAL SING | | | | | | | | | | |
| Gross Generation | 4,404 | 5,545 | 6,392 | 7,358 | 9,001 | 9,327 | 9,851 | 10,400 | 11,424 | 12,330 |
| Own Consumption | 313 | 385 | 444 | 514 | 612 | 585 | 471 | 524 | 492 | 584 |
| Net Generation | 4,091 | 5,159 | 5,948 | 6,844 | 8,389 | 8,743 | 9,381 | 9,876 | 10,932 | 11,746 |
| Transmission Losses | 143 | 172 | 200 | 227 | 269 | 345 | 390 | 394 | 452 | 507 |
| Sales non-regulated clients | 3,377 | 4,359 | 5,019 | 5,868 | 7,313 | 7,499 | 8,046 | 8,473 | 9,433 | 10,164 |
| Sales regulated clients | 612 | 622 | 730 | 748 | 807 | 899 | 945 | 1,009 | 1,047 | 1,075 |
| Total Sales | 3,989 | 4,981 | 5,749 | 6,616 | 8,120 | 8,398 | 8,991 | 9,482 | 10,480 | 11,240 |

MONTHLY AVERAGE HOURLY GENERATION (MW) - 1995-2004 PERIOD

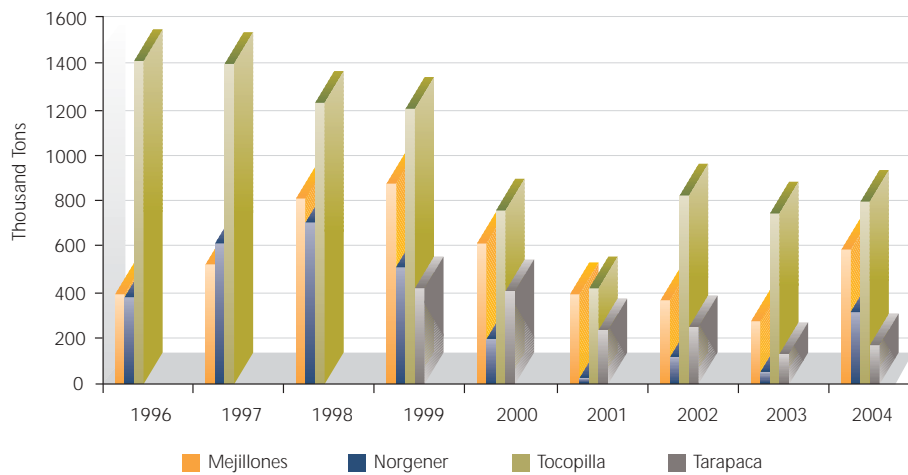


ANNUAL CONSUMPTION OF FUELS PER POWER PLANT 1996 - 2004 PERIOD

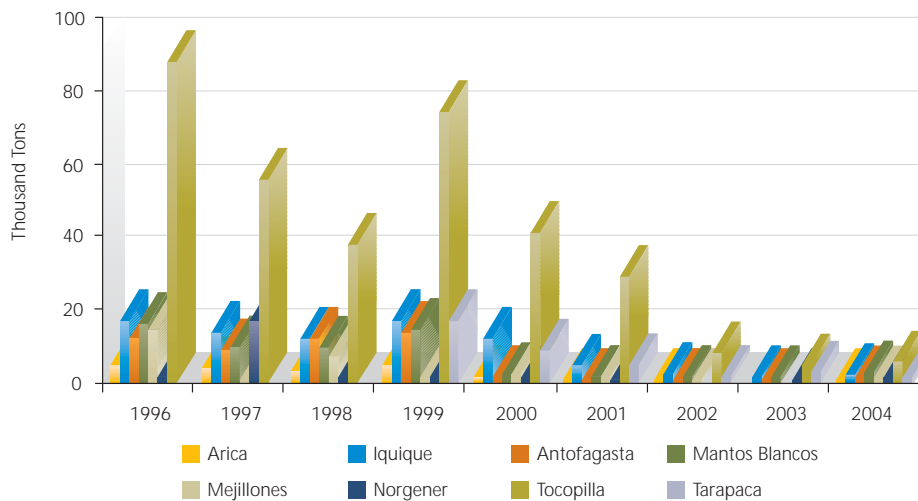
Annual Natural Gas Consumption per Power Plant



Annual Coal Consumption per Power Plant



Annual Liquid Fuels Consumption per Power Plant

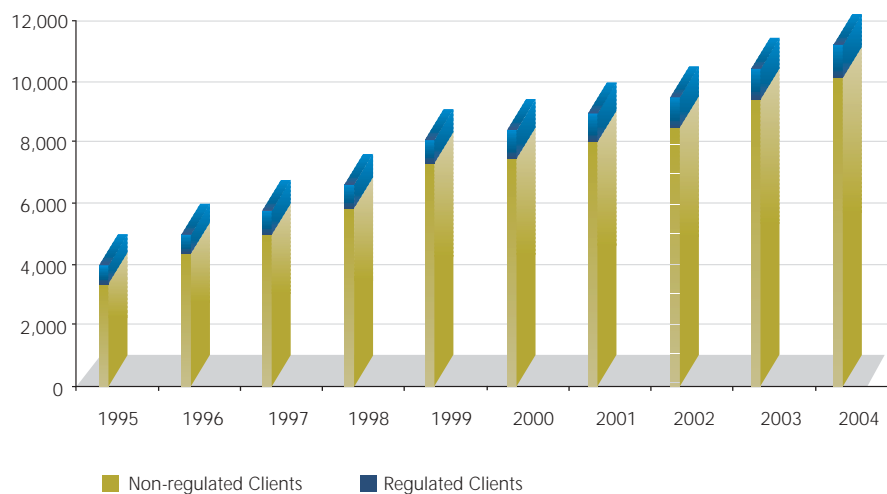


ANNUAL SING SALES (GWh) 1995 - 2004 PERIOD

| Year | Sales | | | Annual | Growth | |
|------|-----------------|-------------------|--------|--------|---------------------|-------------|
| | Non-Reg Clients | Regulated Clients | Total | | Accumulated Average | Accumulated |
| 1995 | 3,377 | 612 | 3,989 | 17.5% | 17.5% | 17.5% |
| 1996 | 4,359 | 622 | 4,981 | 24.9% | 21.2% | 46.8% |
| 1997 | 5,019 | 730 | 5,749 | 15.4% | 19.3% | 69.4% |
| 1998 | 5,868 | 748 | 6,616 | 15.1% | 18.2% | 94.9% |
| 1999 | 7,313 | 807 | 8,120 | 22.7% | 19.1% | 139.2% |
| 2000 | 7,499 | 899 | 8,398 | 3.4% | 16.5% | 147.4% |
| 2001 | 8,046 | 945 | 8,991 | 7.1% | 15.2% | 164.9% |
| 2002 | 8,473 | 1,009 | 9,482 | 5.5% | 13.9% | 179.3% |
| 2003 | 9,433 | 1,047 | 10,480 | 10.5% | 13.6% | 208.8% |
| 2004 | 10,164 | 1,075 | 11,240 | 7.2% | 12.9% | 231.1% |

Note: The accumulated growth in percentage refers to 1994 sales (3,394.4 GWh). Annual sales correspond to net generation minus transmission losses.

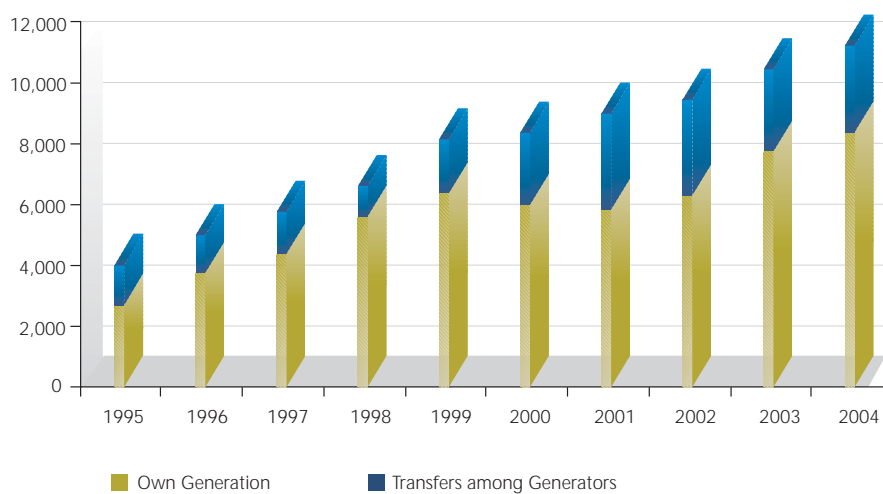
Evolution of SING Annual Sales (GWh)



SING ANNUAL SALES COMPOSITION (GWh) 1995 - 2004 PERIOD

| Year | Energy Sales (GWh) | Own Generation (GWh) | Transfers among Generators (GWh) | Percentage Transfers/Sales (%) |
|------|--------------------|----------------------|----------------------------------|--------------------------------|
| 1995 | 3,989 | 2,720 | 1,269 | 32% |
| 1996 | 4,981 | 3,792 | 1,190 | 24% |
| 1997 | 5,749 | 4,380 | 1,369 | 24% |
| 1998 | 6,616 | 5,581 | 1,035 | 16% |
| 1999 | 8,120 | 6,415 | 1,705 | 21% |
| 2000 | 8,398 | 6,007 | 2,391 | 28% |
| 2001 | 8,991 | 5,808 | 3,183 | 35% |
| 2002 | 9,482 | 6,299 | 3,183 | 34% |
| 2003 | 10,480 | 7,777 | 2,703 | 26% |
| 2004 | 11,240 | 8,407 | 2,832 | 25% |

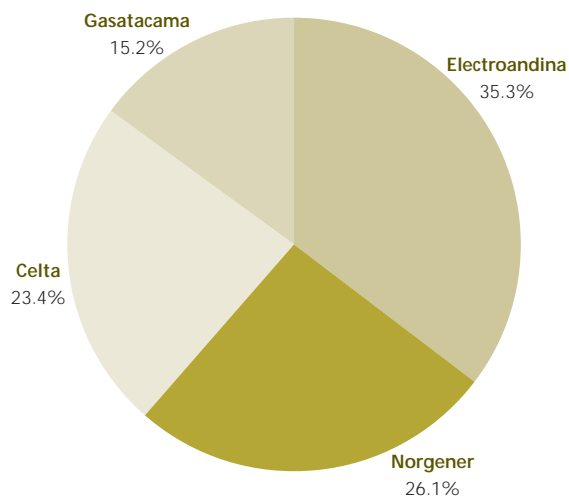
SING Annual Sales Composition (GWh)



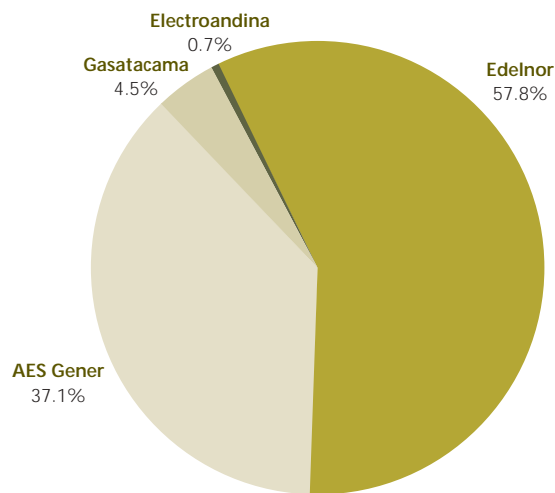
ENERGY TRANSFERS AMONG CDEC-SING GENERATORS COMPANIES (GWh) YEAR 2004

| COMPANY | | JAN | FEB | MAR | APR | MAY | JUNE | JULY | AUG | SEPT | OCT | NOV | DEC | TOTAL |
|---------------|-----------|-------|-------|-------|-------|-------|-------|-------|-------|-------|-------|-------|-------|---------|
| CELTA | Purchases | 56.0 | 35.1 | 59.8 | 28.7 | 15.5 | 64.3 | 85.0 | 45.8 | 82.9 | 58.5 | 49.2 | 82.3 | 663.2 |
| | Sales | | | | | | | | | | | | | |
| EDELNOR | Purchases | | | | | | | | | | | | | 1,637.3 |
| | Sales | 123.1 | 141.2 | 139.3 | 135.6 | 130.0 | 160.7 | 121.9 | 141.2 | 133.6 | 143.7 | 142.8 | 124.2 | |
| ELECTROANDINA | Purchases | 107.3 | 81.8 | 62.1 | | | 38.6 | 57.9 | 130.3 | 105.6 | 132.6 | 175.3 | 108.5 | 1,000.1 |
| | Sales | | | | 18.2 | 0.7 | | | | | | | | |
| AES GENER | Purchases | | | | | | | | | | | | | 1,050.3 |
| | Sales | 96.1 | 80.9 | 94.0 | 0.6 | 58.1 | 88.3 | 104.6 | 96.4 | 96.1 | 114.6 | 110.4 | 110.2 | |
| GASATACAMA | Purchases | | | | 100.6 | 167.3 | 82.2 | 16.0 | 12.7 | | 22.8 | | 28.6 | 430.2 |
| | Sales | 48.6 | 9.6 | 7.8 | | | | | | 55.8 | | 4.5 | | |
| NORGENER | Purchases | 104.6 | 114.8 | 119.1 | 25.1 | 6.0 | 63.9 | 67.5 | 48.8 | 96.9 | 44.4 | 33.2 | 14.9 | 739.2 |
| | Sales | | | | | | | | | | | | | |

Purchases of Power in the CDEC



Sales of Power in the CDEC



ENERGY TRANSFERS AMONG CDEC-SING GENERATORS COMPANIES (GWh) 1995 - 2004 PERIOD

| | | 1995 | 1996 | 1997 | 1998 | 1999 | 2000 | 2001 | 2002 | 2003 | 2004 |
|----------------------|-----------|-------|-------|-------|-------|-------|---------|---------|---------|---------|---------|
| CELTA | Purchases | - | - | - | 0.4 | - | 21.2 | 263.6 | 390.8 | 601.4 | 663.2 |
| | Sales | - | - | - | - | - | 144.5 | 419.7 | 116.0 | 10.4 | - |
| EDELNOR | Purchases | 387.0 | 273.8 | 458.2 | 140.8 | 97.1 | 97.8 | 54.9 | - | - | - |
| | Sales | - | 7.2 | - | 286.3 | 273.0 | 255.3 | 292.1 | 801.1 | 1,263.8 | 1,637.3 |
| ELECTROANDINA | Purchases | 147.9 | 41.5 | 173.4 | 683.0 | 733.3 | 1,438.0 | 1,497.4 | 1,109.5 | 831.7 | 1,000.1 |
| | Sales | 19.5 | 261.1 | 105.2 | 5.0 | 20.2 | - | - | - | - | 18.9 |
| ENDESA | Purchases | 99.6 | 251.6 | 23.2 | 210.9 | 260.2 | - | - | - | - | - |
| | Sales | 22.4 | - | 0.7 | 0.3 | - | - | - | - | - | - |
| AES GENER | Purchases | - | - | - | - | 397.4 | - | 2.7 | - | - | - |
| | Sales | - | - | - | - | - | 473.7 | 629.2 | 997.8 | 1,088.9 | 1,050.3 |
| GASATACAMA | Purchases | - | - | - | - | 0.3 | - | - | 24.0 | 3.5 | 430.2 |
| | Sales | - | - | - | - | 844.4 | 1,549.6 | 2,251.5 | 792.7 | 350.1 | 126.3 |
| NORGENER | Compras | - | 11.6 | 3.7 | - | 216.4 | 833.9 | 1,364.7 | 1,067.2 | 1,266.1 | 739.2 |
| | Ventas | - | - | 592.4 | 342.9 | 604.6 | 645.6 | 172.0 | - | - | - |

Note: Provisional values for May 2000 to December de 2004.

POWER TRANSFERS AMONG CDEC-SING GENERATORS COMPANIES (MW) YEAR 2004

2004 Firm Power Balance

| | CELTA | EDELNOR | ELECTROANDINA | AES GENER | GASATACAMA | NORGENER | TOTAL SING |
|------------------|-------|---------|---------------|-----------|------------|----------|------------|
| Injections [MW] | 69 | 287 | 398 | 288 | 366 | 104 | 1511 |
| Withdrawals [MW] | 129 | 145 | 498 | 94 | 396 | 184 | 1446 |
| Balance [MW] | -60 | 142 | -100 | 194 | -30 | -80 | 65 |

2004 Firm Power Transfers

| | CELTA | EDELNOR | ELECTROANDINA | AES GENER | GASATACAMA | NORGENER | TOTAL SING |
|----------------|-------|---------|---------------|-----------|------------|----------|------------|
| PURCHASES (MW) | 66 | - | 119 | - | 43 | 84 | 312 |
| SALES (MW) | - | 132 | - | 180 | - | - | 312 |

Price of 220 kV Cruise Node Power

| Pricing | Term | | Price of Power [\$/kW-month] | Price of Power [US\$/kW-month] |
|-----------------|------------|------------|---------------------------------|-----------------------------------|
| | From | To | | |
| Oct. - 2003 | 01/01/2004 | 28/01/2004 | 3,895.710 | 5.768 |
| Oct. - 2003 (1) | 29/01/2004 | 30/04/2004 | 3,586.781 | 5.909 |
| Apr. - 2004 | 01/05/2004 | 31/10/2004 | 3,637.220 | 6.023 |
| Oct. - 2004 | 01/11/2004 | 31/12/2004 | 3,713.710 | 6.023 |

(1): Indexación enero de 2004.

POWER TRANSFERS AMONG CDEC-SING GENERATORS COMPANIES (MW) 1995 - 2004 PERIOD

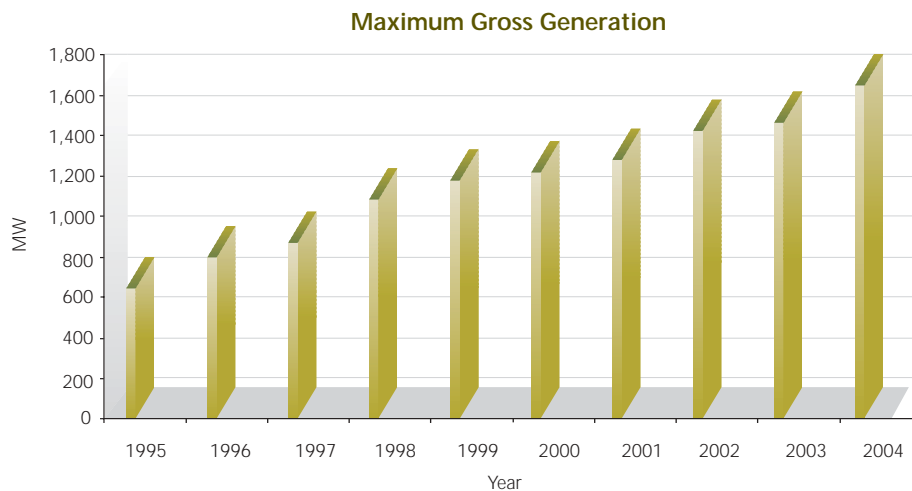
| | CELTA | | EDELNOR | | ENDESA | | ELECTROANDINA | | AES GENER | | GASATACAMA | | NORGENER | |
|-------------|-----------|-------|-----------|-------|-----------|-------|---------------|-------|-----------|-------|------------|-------|-----------|-------|
| | Purchases | Sales | Purchases | Sales | Purchases | Sales | Purchases | Sales | Purchases | Sales | Purchases | Sales | Purchases | Sales |
| 1995 | - | - | 88.9 | - | - | 30.3 | - | 28.2 | - | - | - | - | - | 30.5 |
| 1996 | - | - | 36.1 | - | - | 11.3 | - | 19.6 | - | - | - | - | - | 5.3 |
| 1997 | - | - | 92.5 | - | - | 22.9 | - | 21.7 | - | - | - | - | - | 47.9 |
| 1998 | - | 13.0 | 40.8 | - | 42.1 | - | - | 43.5 | - | - | - | - | - | 26.4 |
| 1999 | 2.5 | - | 62.5 | - | - | - | - | 14.5 | 72.0 | - | - | 40.0 | - | 82.5 |
| 2000 | 42.5 | - | 80.4 | - | - | - | 206.7 | - | - | 155.2 | - | 243.3 | 68.8 | - |
| 2001 | 63.0 | - | 37.4 | - | - | - | 138.2 | - | - | 150.7 | - | 182.5 | 94.6 | - |
| 2002 | 55.1 | - | - | 141.7 | - | - | 174.0 | - | - | 178.9 | 9.8 | - | 81.7 | - |
| 2003 | 52.9 | - | - | 123.9 | - | - | 117.5 | - | - | 164.4 | 34.9 | - | 83.1 | - |
| 2004 | 65.5 | - | - | 132.3 | - | - | 119.3 | - | - | 179.6 | 43.0 | - | 84.2 | - |

Note: Provisional values for the years 2000 to 2004.

SING ANNUAL MAXIMUM DEMAND 1995 - 2004 PERIOD

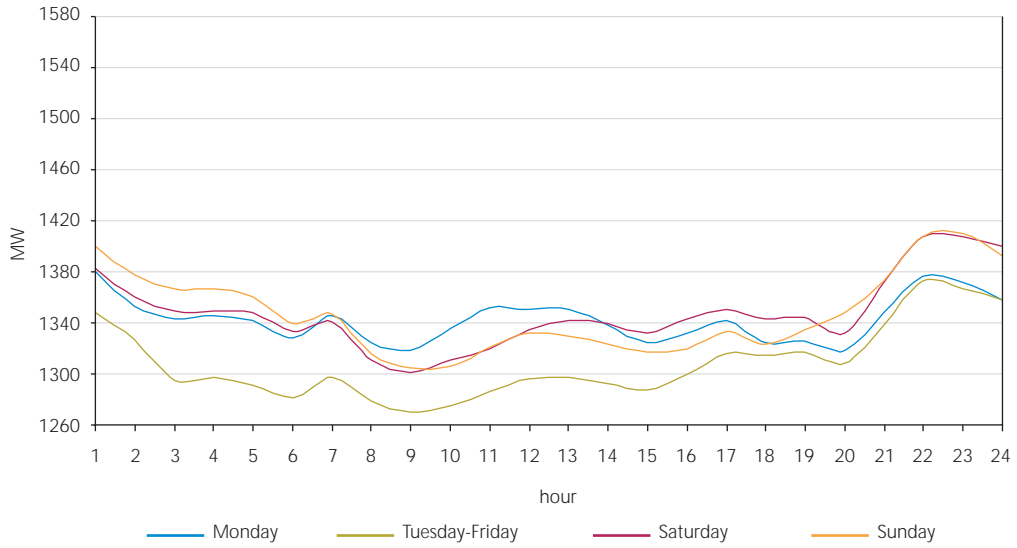
| YEAR | DAY | HOUR | MAXIMUM GROSS GENERATION (MW) | MAXIMUM GROSS DEMAND (MW) |
|------|-----------|------|-------------------------------|---------------------------|
| 1995 | 22-Dec-95 | 23 | 645 | 611 |
| 1996 | 26-Dec-96 | 23 | 795 | 747 |
| 1997 | 25-Nov-97 | 22 | 866 | 812 |
| 1998 | 23-Dec-98 | 23 | 1,087 | 1,021 |
| 1999 | 13-Dec-99 | 22 | 1,173 | 1,094 |
| 2000 | 15-Dec-00 | 22 | 1,213 | 1,153 |
| 2001 | 05-Nov-01 | 22 | 1,281 | 1,221 |
| 2002 | 23-Dec-02 | 22 | 1,420 | 1,360 |
| 2003 | 14-Dec-03 | 22 | 1,467 | 1,416 |
| 2004 | 19-Dec-04 | 23 | 1,644 | 1,567 |

Note:
Maximum Gross Deman is obtained as gross generation minus the power plant's own consumption.

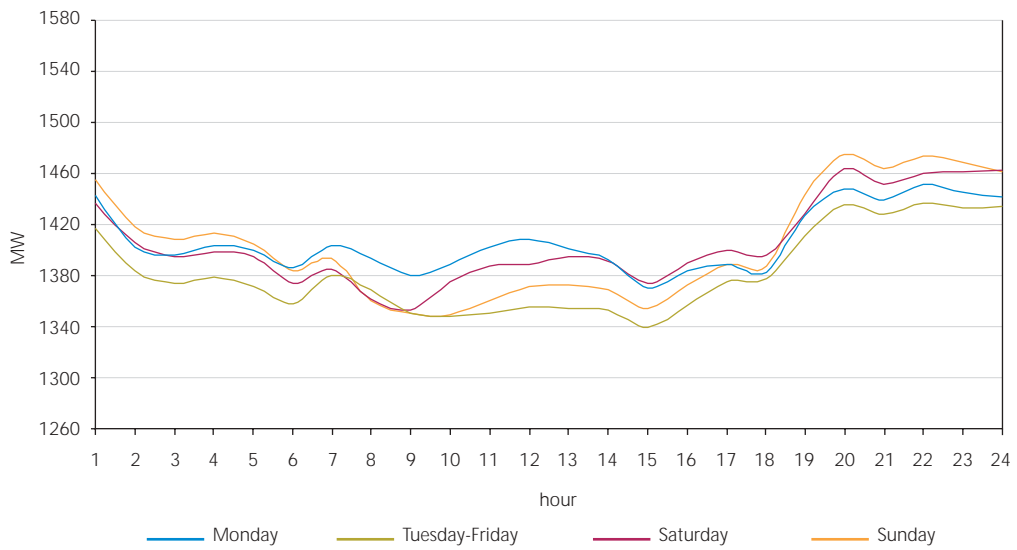


HOURLY GROSS GENERATION. TYPICAL DAILY CURVES - YEAR 2004

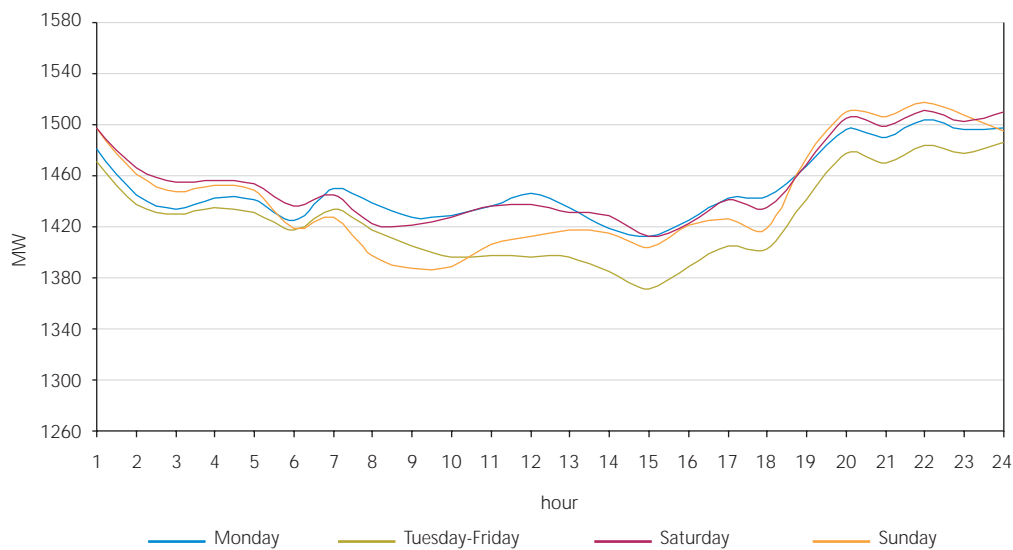
January - March, 2004 Average Hourly Gross Generation



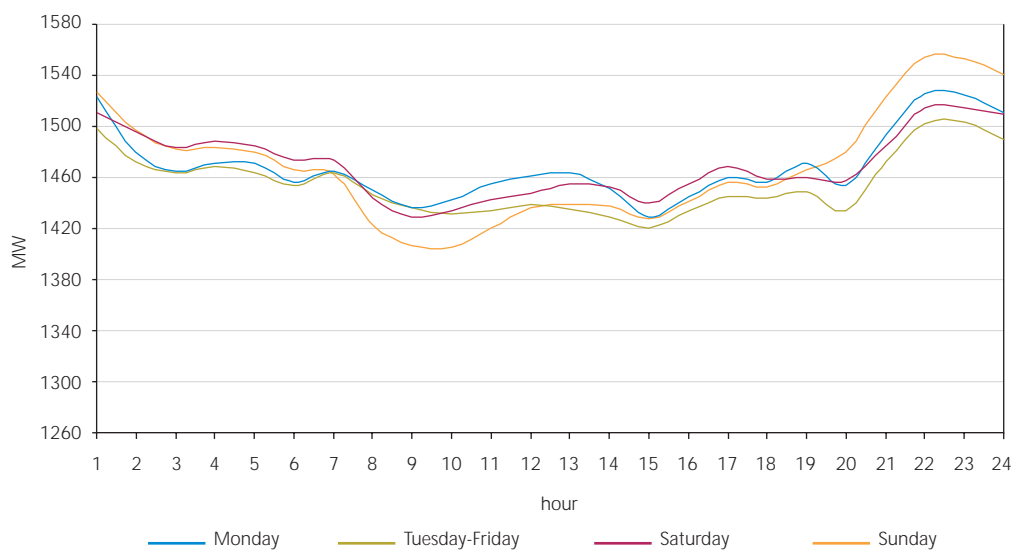
April - June, 2003 Average Hourly Gross Generation



July - September, 2004 Average Hourly Gross Generation



October - December, 2004 Average Hourly Gross Generation



MARGINAL ENERGY COSTS OF 220 kV (\$/kWh) CRUCERO NODE - YEAR 2004

| DAY | JANUARY | FEBRUARY | MARCH | APRIL | MAY | JUNE |
|-----------------|-----------------|-----------------|-----------------|-----------------|-----------------|-----------------|
| 1 | 7.25555 | 11.98679 | 9.48558 | 50.00989 | 15.60148 | 16.31086 |
| 2 | 8.54055 | 12.13178 | 7.11370 | 11.10251 | 15.07745 | 18.50859 |
| 3 | 8.83223 | 11.20221 | 8.48925 | 12.02714 | 15.69143 | 17.23724 |
| 4 | 7.64435 | 11.78778 | 10.50823 | 12.32821 | 15.67010 | 15.05288 |
| 5 | 7.95740 | 9.14411 | 12.39359 | 13.04791 | 15.55338 | 16.05623 |
| 6 | 7.51947 | 9.53461 | 15.58739 | 12.96017 | 22.90287 | 16.24392 |
| 7 | 9.53107 | 10.28554 | 12.19009 | 12.47544 | 15.95743 | 16.41270 |
| 8 | 8.98714 | 10.25388 | 9.53793 | 15.57293 | 15.63282 | 14.64328 |
| 9 | 9.45866 | 10.76172 | 8.51601 | 12.15356 | 15.19479 | 16.09250 |
| 10 | 8.61309 | 10.76094 | 8.65829 | 12.95875 | 16.81244 | 21.61866 |
| 11 | 9.77770 | 10.44160 | 10.05087 | 11.63385 | 15.24424 | 20.75804 |
| 12 | 16.01295 | 9.89209 | 9.88351 | 12.17202 | 16.11603 | 19.98095 |
| 13 | 10.27012 | 10.04622 | 9.82608 | 13.16603 | 16.53259 | 20.99753 |
| 14 | 9.23823 | 9.89974 | 9.28418 | 14.78275 | 16.29224 | 21.07136 |
| 15 | 9.67952 | 10.28049 | 9.84644 | 15.19639 | 16.45533 | 20.31181 |
| 16 | 10.14241 | 10.35145 | 10.07091 | 18.79016 | 16.49044 | 21.46438 |
| 17 | 8.88922 | 10.41645 | 10.49854 | 15.30425 | 15.83851 | 17.67857 |
| 18 | 10.35945 | 10.41515 | 11.74010 | 15.11840 | 14.65288 | 15.56169 |
| 19 | 10.39127 | 10.36413 | 11.85079 | 18.21325 | 13.50081 | 16.32324 |
| 20 | 8.63611 | 10.78068 | 11.90831 | 15.14950 | 15.00435 | 16.76789 |
| 21 | 12.71176 | 10.96169 | 11.99242 | 15.26164 | 16.52699 | 16.66791 |
| 22 | 10.78892 | 10.76843 | 11.82421 | 15.19298 | 16.39506 | 15.25834 |
| 23 | 64.85060 | 11.24305 | 11.45268 | 15.50610 | 20.49249 | 15.34279 |
| 24 | 37.65098 | 9.56626 | 11.74727 | 16.23379 | 16.38999 | 25.74756 |
| 25 | 11.66920 | 8.86460 | 10.29068 | 17.29818 | 16.43802 | 18.22527 |
| 26 | 11.48005 | 9.45460 | 10.27188 | 17.23666 | 17.00552 | 13.23330 |
| 27 | 13.93229 | 9.25665 | 11.17813 | 18.53502 | 18.07909 | 16.35451 |
| 28 | 10.65989 | 10.68625 | 10.14746 | 18.69641 | 21.00480 | 16.41156 |
| 29 | 12.94785 | 10.08246 | 10.77480 | 15.66881 | 26.08425 | 18.21233 |
| 30 | 10.96640 | - | 10.17704 | 21.39834 | 34.33821 | 16.09644 |
| 31 | 11.62923 | - | 10.80246 | - | 43.27999 | - |
| Promedio | 12.59651 | 10.40073 | 10.58281 | 16.17303 | 18.26632 | 17.68807 |

Note: Provisional values. Daily averages in \$/kWh.

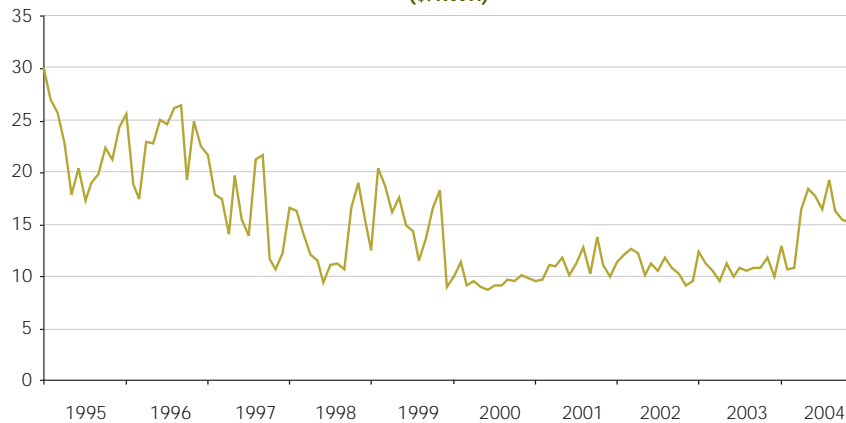
| | JULY | AUGUST | SEPTEMBER | OCTOBER | NOVEMBER | DECEMBER |
|--|-----------------|-----------------|-----------------|-----------------|-----------------|-----------------|
| | 14.82374 | 17.58566 | 12.86653 | 9.64958 | 15.34257 | 12.13215 |
| | 14.98808 | 18.26209 | 16.05221 | 14.19931 | 14.51608 | 16.03052 |
| | 16.10334 | 23.48107 | 14.26613 | 14.66499 | 13.86171 | 8.56343 |
| | 16.99740 | 16.20674 | 24.67186 | 15.75327 | 9.75769 | 13.62333 |
| | 17.06055 | 17.87845 | 16.30845 | 17.12473 | 15.36619 | 14.50323 |
| | 14.45060 | 17.22275 | 18.07529 | 13.41326 | 15.10504 | 12.40172 |
| | 14,61902 | 17.43809 | 18.61256 | 11.36875 | 13.24278 | 11.50789 |
| | 12,19434 | 17.78688 | 17.43926 | 12.79596 | 15.19494 | 14.87892 |
| | 12,52153 | 17.77837 | 16.76421 | 14.31961 | 15.16132 | 12.93251 |
| | 14.34213 | 18.58117 | 16.69436 | 11.85925 | 14.59091 | 15.95556 |
| | 16.33425 | 19.33038 | 14.97447 | 15.75914 | 17.72494 | 14.03880 |
| | 13.54717 | 17.98651 | 16.61245 | 17.60040 | 15.98931 | 15.14041 |
| | 15.43159 | 19.23617 | 18.86332 | 16.76021 | 15.02718 | 15.00725 |
| | 16.09314 | 21.50385 | 12.18064 | 17.85563 | 16.23896 | 14.97711 |
| | 16.77866 | 20.98503 | 15.60868 | 20.27870 | 18.63427 | 15.01850 |
| | 17.03162 | 20.04130 | 15.56885 | 16.45887 | 15.61983 | 16.51671 |
| | 17.19017 | 15.56155 | 11.36113 | 15.66216 | 14.94184 | 16.68229 |
| | 17.16376 | 16.82505 | 13.20675 | 15.74092 | 16.71346 | 16.45800 |
| | 17.09240 | 17.90090 | 15.62483 | 15.69118 | 22.21793 | 15.48366 |
| | 17.22044 | 18.16823 | 15.46432 | 15.45167 | 16.44578 | 14.94868 |
| | 16.61251 | 21.67226 | 18.79717 | 16.01855 | 16.31266 | 17.17629 |
| | 16.98691 | 21.66313 | 13.77458 | 15.97805 | 17.65492 | 16.68677 |
| | 17.01001 | 21.93007 | 14.26047 | 15.17954 | 14.99702 | 15.49335 |
| | 16.88196 | 21.78473 | 13.00307 | 14.74497 | 18.52481 | 16.16263 |
| | 16.02447 | 21.02417 | 11.06756 | 14.84327 | 14.51983 | 15.78726 |
| | 15.67977 | 21.42886 | 10.06470 | 14.78016 | 12.14838 | 14.92594 |
| | 16.02740 | 19.28505 | 10.90036 | 17.65002 | 9.40220 | 13.14182 |
| | 17.20961 | 20.15177 | 12.50788 | 17.71774 | 15.37345 | 15.93498 |
| | 28.30608 | 18.09182 | 32.16639 | 16.64288 | 16.26016 | 24.48603 |
| | 17.60864 | 18.00722 | 33.76112 | 19.40066 | 13.51327 | 16.91544 |
| | 17.89965 | 24.15874 | - | 15.93120 | - | 16.13596 |
| | 16.39454 | 19.32122 | 16.38398 | 15.53056 | 15.34664 | 15.14990 |

MARGINAL ENERGY COSTS OF 220 kV (\$/kWh) CRUCERO NODE - 1995 - 2004 PERIOD

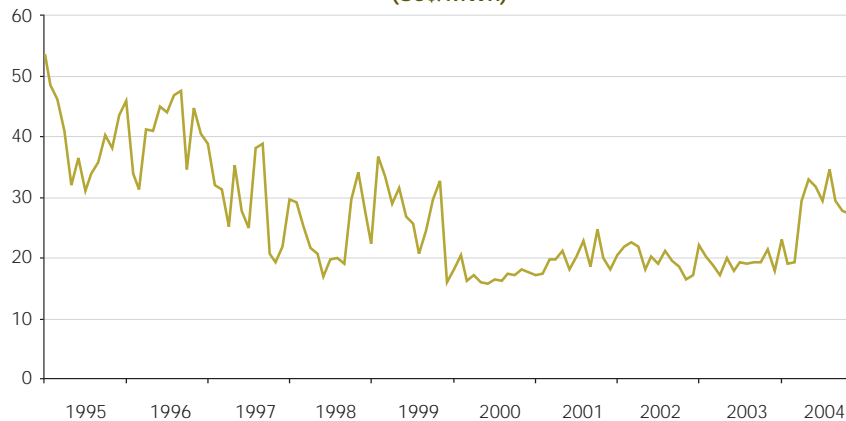
| Month \ Year | 1995 | 1996 | 1997 | 1998 | 1999 | 2000 | 2001 | 2002 | 2003 | 2004 |
|----------------|-------------|-------------|-------------|-------------|-------------|------------|-------------|-------------|-------------|-------------|
| January | 20.3 | 18.6 | 16.9 | 13.7 | 10.7 | 8.9 | 8.8 | 10.7 | 12.0 | 12.6 |
| February | 18.3 | 13.8 | 13.7 | 13.5 | 17.5 | 10.1 | 8.9 | 11.4 | 11.0 | 10.4 |
| March | 17.6 | 12.8 | 13.7 | 11.7 | 16.1 | 8.1 | 10.2 | 11.9 | 10.4 | 10.6 |
| April | 15.7 | 17.1 | 11.0 | 10.0 | 14.0 | 8.6 | 10.2 | 11.6 | 9.5 | 16.2 |
| May | 12.3 | 17.1 | 15.6 | 9.6 | 15.3 | 8.1 | 11.0 | 9.7 | 11.0 | 18.3 |
| June | 14.2 | 18.9 | 12.3 | 7.9 | 13.0 | 7.9 | 9.5 | 10.7 | 9.8 | 17.7 |
| July | 12.1 | 18.6 | 11.1 | 9.3 | 12.4 | 8.3 | 10.5 | 10.1 | 10.6 | 16.4 |
| August | 13.5 | 19.8 | 17.0 | 9.4 | 10.0 | 8.2 | 12.0 | 11.3 | 10.4 | 19.3 |
| September | 14.3 | 20.2 | 17.5 | 9.0 | 11.9 | 8.8 | 9.7 | 10.5 | 10.6 | 16.4 |
| October | 16.2 | 14.8 | 9.5 | 14.1 | 14.5 | 8.8 | 13.1 | 10.1 | 10.6 | 15.5 |
| November | 15.4 | 19.2 | 8.8 | 16.2 | 16.0 | 9.3 | 10.6 | 8.9 | 11.7 | 15.3 |
| December | 17.6 | 17.5 | 10.0 | 13.2 | 7.9 | 9.1 | 9.5 | 9.3 | 9.7 | 15.1 |
| Average | 15.6 | 17.4 | 13.1 | 11.5 | 13.3 | 8.7 | 10.3 | 10.5 | 10.6 | 15.3 |

Note: Provisional values for April and May 1998, and from May 2000 to December de 2004.
Monthly averages in nominal \$/kWh.

Marginal Energy Costs of Average Monthly in Crucero Nodes (\$/kWh)



Marginal Energy Costs of Average Monthly in Crucero Nodes (US\$/MWh)

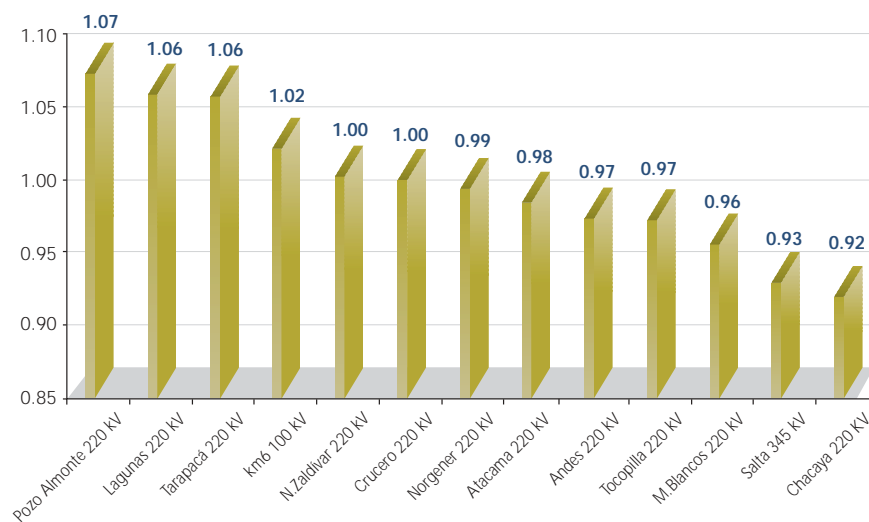


ENERGY PENALTY FACTORS YEAR 2004

| Bar | Average | Maximum | Minimum |
|---------------------|---------|---------|---------|
| Pozo Almonte 220 kV | 1.07 | 1.09 | 1.06 |
| Lagunas 220 kV | 1.06 | 1.07 | 1.05 |
| Tarapacá 220 kV | 1.06 | 1.07 | 1.04 |
| km6 100 kV | 1.02 | 1.02 | 1.02 |
| N.Zaldivar 220 kV | 1.00 | 1.03 | 0.97 |
| Crucero 220 kV | 1.00 | 1.00 | 1.00 |
| Norgener 220 kV | 0.99 | 1.00 | 0.99 |
| Atacama 220 kV | 0.98 | 1.01 | 0.97 |
| Andes 220 kV | 0.97 | 1.02 | 0.90 |
| Tocopilla 220 kV | 0.97 | 0.98 | 0.96 |
| M.Blancos 220 kV | 0.96 | 0.98 | 0.92 |
| Salta 345 kV | 0.93 | 1.01 | 0.85 |
| Chacaya 220 KV | 0.92 | 0.95 | 0.89 |

Note: Values correspond to weekly planning.

Energy Penalty Factors - Year 2004

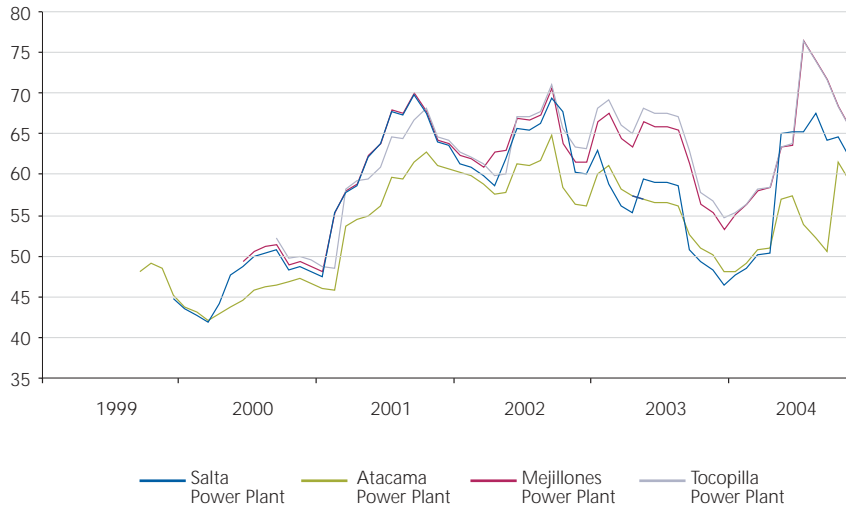


Note: Values correspond to average penalty factors.

FUEL PRICES PER POWER PLANT

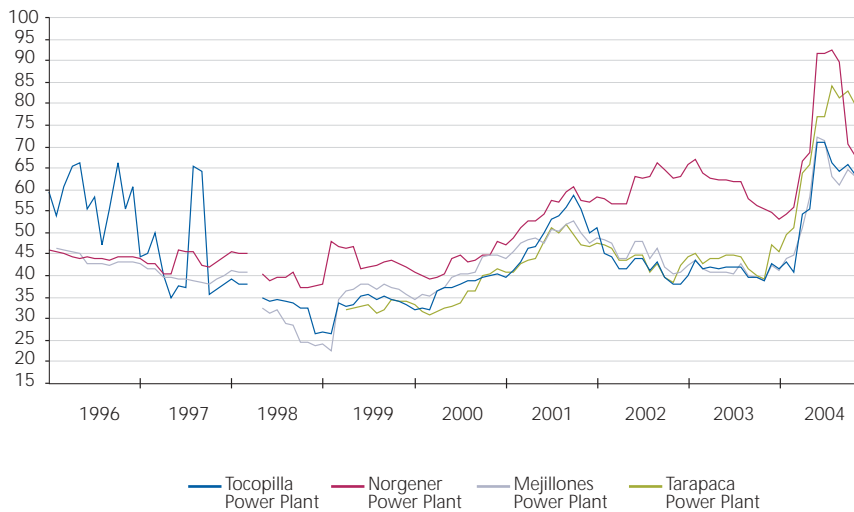
PRICE OF NATURAL GAS

Values at the end of each month and update as of December 2004
(million US\$ /m³)



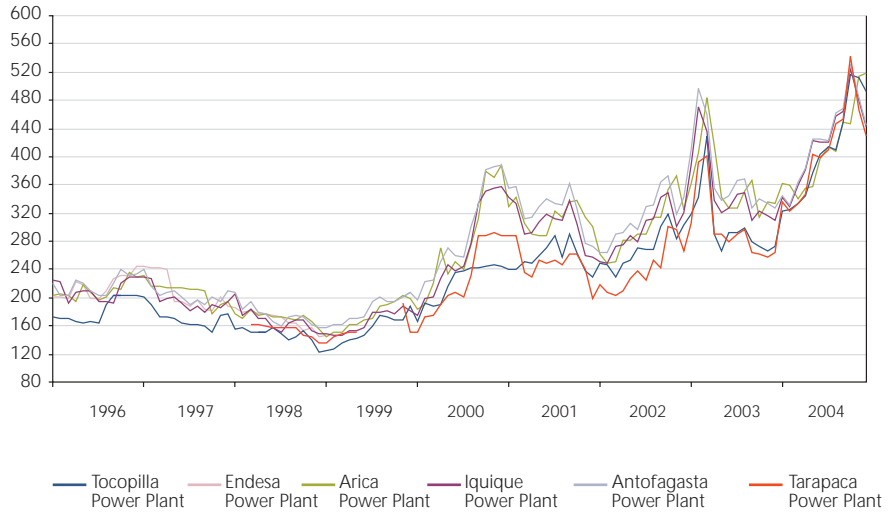
PRICE OF COAL

Values at the end of each month and update as of December 2004
(US\$ /Ton)



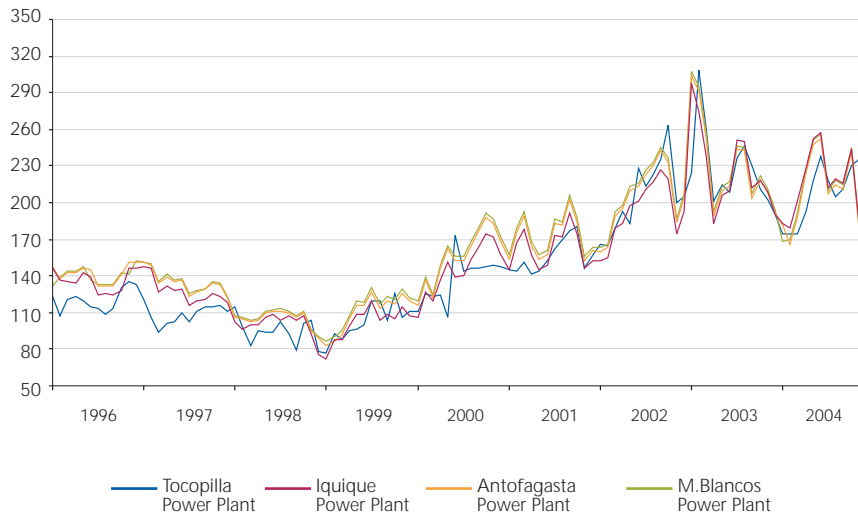
PRICE OF OIL DIESEL

Values at the end of each month and update as of December 2004
(US\$ /Ton)



PRICE OF FUEL OIL Nº 6

Values at the end of each month and update as of December 2004
(US\$ /Ton)



Edición
CDEC-SING

Diseño
RACIC GRUPO DISEÑO

Impresión
DIPRINT





CDEC-SING

SANTIAGO

Nueva de Lyon 72
Of. 1202 Providencia
Tel: (56-2) 378 9334
Fax: (56-2) 378 9296

ANTOFAGASTA

General Lagos 0377
Playa Blanca
Tel: (56-55) 247 474
Fax: (56-55) 246 129

www.cdec-sing.cl